

Recombinant Human FCER2 protein, His-tagged

Cat. No. FCER2-5163H Lot. No. (See product label)

SPECIFICATION

Product Overview	Recombinant Human FCER2 protein(P06734-1)(Asp48-Ser321), fused with N-terminal His tag, was expressed in HEK293.
Species	Human
Source	HEK293
ProteinLength	Asp48-Ser321
Tag	N-His
Form	Lyophilized from 0.22µm filtered solution in PBS (pH 7.4). Normally 5% trehalose is added as protectant before lyophilization.
Molecular Mass	The protein has a predicted MW of 31.8 kDa. Due to glycosylation, the protein migrates to 38-45 kDa based on Tris-Bis PAGE result.
Endotoxin	Less than 1EU per µg by the LAL method.
Purity	> 95% as determined by Tris-Bis PAGE;> 95% as determined by HPLC
Storage	Reconstituted protein stable at -80°C for 12 months, 4°C for 1 week. Use a manual defrost freezer and avoid repeated freeze-thaw cycles.
Reconstitution	Centrifuge tubes before opening. Reconstituting to a concentration more than 100

 Tel: 1-631-559-9269 1-516-512-3133

 Email: info@creative-biomart.com  Fax: 1-631-938-8127

 45-1 Ramsey Road, Shirley, NY 11967, USA

µg/ml is recommended. Dissolve the lyophilized protein in distilled water.

GENE INFORMATION

Gene Name FCER2 Fc fragment of IgE, low affinity II, receptor for (CD23) [Homo sapiens]

Official Symbol FCER2

Synonyms FCER2; Fc fragment of IgE, low affinity II, receptor for (CD23); CD23A, Fc fragment of IgE, low affinity II, receptor for (CD23A) , FCE2; low affinity immunoglobulin epsilon Fc receptor; CD23; CLEC4J; BLAST-2; CD23 antigen; fc-epsilon-RII; lymphocyte IgE receptor; immunoglobulin E-binding factor; C-type lectin domain family 4, member J; FCE2; CD23A; IGEBF;

Gene ID 2208

mRNA Refseq NM_001207019

Protein Refseq NP_001193948

MIM 151445

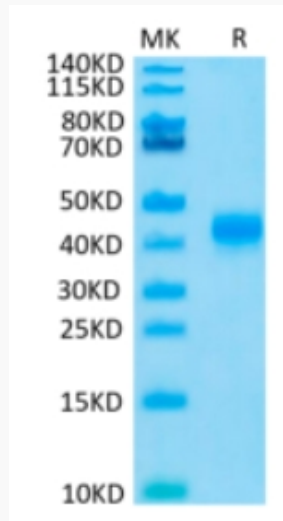
UniProt ID P06734

 Tel: 1-631-559-9269 1-516-512-3133

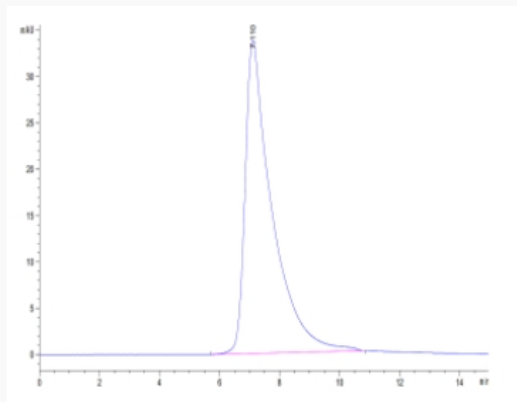
 Email: info@creative-biomart.com  Fax: 1-631-938-8127

 45-1 Ramsey Road, Shirley, NY 11967, USA

Tris-Bis PAGE



SEC-HPLC



 Tel: 1-631-559-9269 1-516-512-3133

 Email: info@creative-biomart.com  Fax: 1-631-938-8127

 45-1 Ramsey Road, Shirley, NY 11967, USA