

Recombinant Human FCER2 Protein, His-tagged

Cat. No. FCER2-923H Lot. No. (See product label)

SPECIFICATION

Product Overview	Recombinant Human FCER2 Protein (Asp48-Ser321) with His tag was expressed in 293F.
Species	Human
Source	HEK293
ProteinLength	Asp48-Ser321
Description	The protein encoded by this gene is a B-cell specific antigen, and a low-affinity receptor for IgE. It has essential roles in B cell growth and differentiation, and the regulation of IgE production. This protein also exists as a soluble secreted form, then functioning as a potent mitogenic growth factor. Alternatively spliced transcript variants encoding different isoforms have been described for this gene.
Form	Freeze-dried powder
Molecular Mass	Predicted Molecular Mass: 32.6 kDa; Accurate Molecular Mass: 43 kDa
Purity	> 90%
Applications	Positive Control; Immunogen; SDS-PAGE; WB.
Stability	The thermal stability is described by the loss rate. The loss rate was determined by accelerated thermal degradation test, that is, incubate the protein at 37 centigrade for

 Tel: 1-631-559-9269 1-516-512-3133

 Email: info@creative-biomart.com  Fax: 1-631-938-8127

 45-1 Ramsey Road, Shirley, NY 11967, USA

48h, and no obvious degradation and precipitation were observed. The loss rate is less than 5% within the expiration date under appropriate storage condition.

Storage

Avoid repeated freeze/thaw cycles. Store at 2-8 centigrade for one month. Aliquot and store at -80 centigrade for 12 months.

Storage Buffer

PBS, pH7.4, containing 0.01% SKL, 1mM DTT, 5% Trehalose and Proclin300.

Reconstitution

Reconstitute in 10mM PBS (pH7.4) to a concentration of 0.1-1.0 mg/mL. Do not vortex.

GENE INFORMATION

Gene Name

FCER2 Fc fragment of IgE, low affinity II, receptor for (CD23) [Homo sapiens (human)]

Official Symbol

FCER2

Synonyms

FCER2; Fc fragment of IgE, low affinity II, receptor for (CD23); CD23A, Fc fragment of IgE, low affinity II, receptor for (CD23A), FCE2; low affinity immunoglobulin epsilon Fc receptor; CD23; CLEC4J; BLAST-2; CD23 antigen; fc-epsilon-RII; lymphocyte IgE receptor; immunoglobulin E-binding factor; C-type lectin domain family 4, member J; FCE2; CD23A; IGEBF;

Gene ID

2208

mRNA Refseq

NM_001207019

Protein Refseq

NP_001193948

MIM

151445

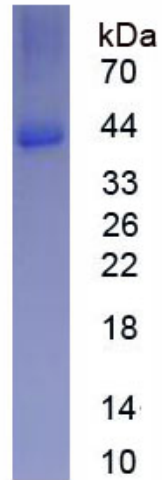
 Tel: 1-631-559-9269 1-516-512-3133

 Email: info@creative-biomart.com  Fax: 1-631-938-8127

 45-1 Ramsey Road, Shirley, NY 11967, USA

UniProt ID

P06734



 Tel: 1-631-559-9269 1-516-512-3133

 Email: info@creative-biomart.com  Fax: 1-631-938-8127

 45-1 Ramsey Road, Shirley, NY 11967, USA