

# Recombinant Human FCGR1A Full Length Transmembrane protein, His-tagged

Cat. No. FCGR1A-1038H Lot. No. (See product label)

## SPECIFICATION

### Product Overview

Recombinant Human FCGR1A protein(P12314)(16-374aa), fused with N-terminal His tag, was expressed in in vitro E. coli expression system.

### Species

Human

### Source

E.coli

### ProteinLength

16-374aa

### Form

If the delivery form is liquid, the default storage buffer is Tris/PBS-based buffer, 5%-50% glycerol.  
If the delivery form is lyophilized powder, the buffer before lyophilization is Tris/PBS-based buffer, 6% Trehalose, pH 8.0.

### Molecular Mass

46.9 kDa

### AA Sequence

QVDTTKAVITLQPPWVSVFQEETVTLHCEVLHLPGSSSTQWFLNGTATQTSTPSYRI  
TSASVNDSGEYRCQRGLSGRSDPIQLEIHRGWLLLQVSSRVFTEGEPLALRCHAWK  
DKLVYNVLYYRNGKAFKFFHWNSNLTILKTNISHNGTYHCSGMGKHRYTSAGISVTV  
KELFPAPVLNASVTSPLEGLNLVTLSCETKLLLQRPGLQLYFSFYMGSKTLRGRNTS  
SEYQILTARREDSGLYWCEAATEDGNVLKRSPLELQVLGLQLPTPVWFHVLVFLAV  
GIMFLVNTVLWVTIRKELKRKKKWDLEISLDSGHEKKVISSLQEDRHLEEEELKCQEQQ  
EEQLQEGVHRKEPQGAT

 Tel: 1-631-559-9269 1-516-512-3133

 Email: [info@creative-biomart.com](mailto:info@creative-biomart.com)  Fax: 1-631-938-8127

 45-1 Ramsey Road, Shirley, NY 11967, USA

<b>Purity</b>	Greater than 85% as determined by SDS-PAGE.
<b>Storage</b>	Store at -20°C/-80°C upon receipt, aliquoting is necessary for mutiple use. Avoid repeated freeze-thaw cycles.
<b>Reconstitution</b>	Please reconstitute protein in deionized sterile water to a concentration of 0.1-1.0 mg/mL. We recommend to add 5-50% of glycerol (final concentration) and aliquot for long-term storage at -20°C/-80°C.

## GENE INFORMATION

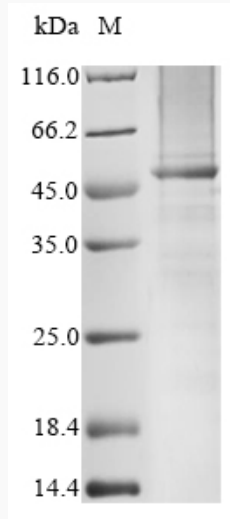
<b>Gene Name</b>	FCGR1A Fc fragment of IgG, high affinity Ia, receptor (CD64) [ Homo sapiens ]
<b>Official Symbol</b>	FCGR1A
<b>Synonyms</b>	FCGR1A; Fc fragment of IgG, high affinity Ia, receptor (CD64); Fc fragment of IgG, high affinity Ia, receptor for (CD64); high affinity immunoglobulin gamma Fc receptor I; CD64; CD64A; fcgammaRIa; Fc-gamma RI; fc-gamma RIA; Fc gamma receptor; IgG Fc receptor I; Fc-gamma receptor I A1; FCRI; IGFR1; FLJ18345;
<b>Gene ID</b>	2209
<b>mRNA Refseq</b>	NM_000566
<b>Protein Refseq</b>	NP_000557
<b>MIM</b>	146760
<b>UniProt ID</b>	P12314

 Tel: 1-631-559-9269 1-516-512-3133

 Email: [info@creative-biomart.com](mailto:info@creative-biomart.com)  Fax: 1-631-938-8127

 45-1 Ramsey Road, Shirley, NY 11967, USA

**SDS-PAGE**



 Tel: 1-631-559-9269 1-516-512-3133

 Email: [info@creative-biomart.com](mailto:info@creative-biomart.com)  Fax: 1-631-938-8127

 45-1 Ramsey Road, Shirley, NY 11967, USA