

Active Recombinant Human FCGR1A protein, His-tagged

Cat. No. FCGR1A-2224H Lot. No. (See product label)

SPECIFICATION

Product Overview	Active Recombinant Human FCGR1A protein(NP_000557.1) (Met 1-Pro 288) was expressed in HEK293, fused with a polyhistidine tag at the C-terminus.
Species	Human
Source	HEK293
ProteinLength	1-288 aa
Form	Lyophilized from sterile PBS, pH 7.4.
Bio-activity	1. Measured by its binding ability in a functional ELISA. Immobilized CD64 at 10 µg/ml can bind human IgG1 with a linear range of 0.39-25 ng/ml. 2. Scatchard analysis showed the affinity constant (Kd) of CD64 bound to Human IgG1 was 0.059 nM.
Molecular Mass	The recombinant human CD64A consists of 284 amino acids and has a predicted molecular mass of 32 kDa.
Endotoxin	< 1 EU/g as determined by LAL test.
Purity	> 90 % as determined by SDS-PAGE
Storage	Store it under sterile conditions at -20°C to -80°C upon receiving. Recommend to aliquot the protein into smaller quantities for optimal storage. Avoid repeated freeze-

 Tel: 1-631-559-9269 1-516-512-3133

 Email: info@creative-biomart.com  Fax: 1-631-938-8127

 45-1 Ramsey Road, Shirley, NY 11967, USA

thaw cycles.

Reconstitution

It is recommended that sterile water be added to the vial to prepare a stock solution of 0.2 ug/ul. Centrifuge the vial at 4°C before opening to recover the entire contents.

GENE INFORMATION

Gene Name FCGR1A Fc fragment of IgG, high affinity Ia, receptor (CD64) [Homo sapiens]

Official Symbol FCGR1A

Synonyms

FCGR1A; Fc fragment of IgG, high affinity Ia, receptor (CD64); Fc fragment of IgG, high affinity Ia, receptor for (CD64); high affinity immunoglobulin gamma Fc receptor I; CD64; CD64A; fcgammaRIa; Fc-gamma RI; fc-gamma RIA; Fc gamma receptor; IgG Fc receptor I; Fc-gamma receptor I A1; FCRI; IGFR1; FLJ18345;

Gene ID 2209

mRNA Refseq NM_000566

Protein Refseq NP_000557

MIM 146760

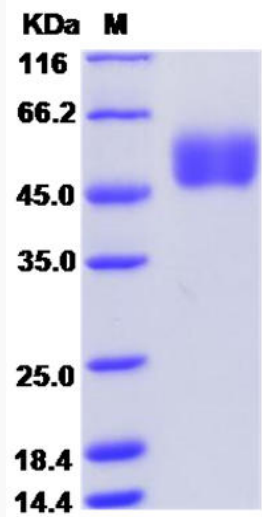
UniProt ID P12314

 Tel: 1-631-559-9269 1-516-512-3133

 Email: info@creative-biomart.com  Fax: 1-631-938-8127

 45-1 Ramsey Road, Shirley, NY 11967, USA

SDS-PAGE



 Tel: 1-631-559-9269 1-516-512-3133

 Email: info@creative-biomart.com  Fax: 1-631-938-8127

 45-1 Ramsey Road, Shirley, NY 11967, USA