

## Active Recombinant Human FCGR1A Protein, His-tagged

Cat. No. FCGR1A-584H Lot. No. (See product label)

### SPECIFICATION

<b>Product Overview</b>	Recombinant Human FCGR1A Protein(Gln16-Leu281), fused with His tag, was expressed in HEK293.
<b>Species</b>	Human
<b>Source</b>	HEK293
<b>ProteinLength</b>	Gln16-Leu281
<b>Form</b>	Lyophilized from 0.22 µm filtered solution in PBS, pH7.4.
<b>Bio-activity</b>	Anti-Human HER2 (Trastuzumab) captured on Protein A chip , can bind Recombinant Human CD64 / His Protein with a KD constant of 5.84E-11 M, determined in a SPR assay .
<b>Molecular Mass</b>	The protein has a calculated MW of 32kDa.The reducing (R) heterodimer protein migrates as 50-70 kDa due to glycosylation
<b>Endotoxin</b>	<1EU/mg
<b>Purity</b>	SDS-PAGE>95%
<b>Storage</b>	Store at -20°C.
<b>Reconstitution</b>	It is recommended that sterile water be added to the vial to prepare a stock solution of

 Tel: 1-631-559-9269 1-516-512-3133

 Email: [info@creative-biomart.com](mailto:info@creative-biomart.com)  Fax: 1-631-938-8127

 45-1 Ramsey Road, Shirley, NY 11967, USA

0.2 ug/ul. Centrifuge the vial at 4°C before opening to recover the entire contents.

## GENE INFORMATION

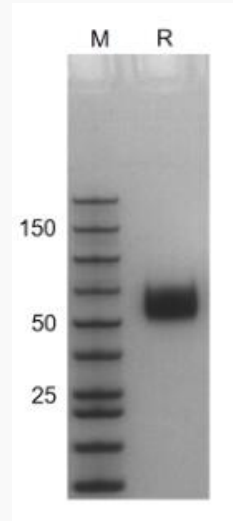
<b>Gene Name</b>	FCGR1A Fc fragment of IgG, high affinity Ia, receptor (CD64) [ Homo sapiens ]
<b>Official Symbol</b>	FCGR1A
<b>Synonyms</b>	FCGR1A; Fc fragment of IgG, high affinity Ia, receptor (CD64); Fc fragment of IgG, high affinity Ia, receptor for (CD64); high affinity immunoglobulin gamma Fc receptor I; CD64; CD64A; fcgammaR1a; Fc-gamma RI; fc-gamma RIA; Fc gamma receptor; IgG Fc receptor I; Fc-gamma receptor I A1; FCRI; IGFR1; FLJ18345;
<b>Gene ID</b>	2209
<b>mRNA Refseq</b>	NM_000566
<b>Protein Refseq</b>	NP_000557
<b>MIM</b>	146760
<b>UniProt ID</b>	P12314

 Tel: 1-631-559-9269 1-516-512-3133

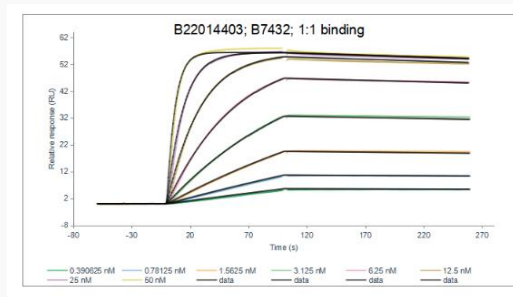
 Email: [info@creative-biomart.com](mailto:info@creative-biomart.com)  Fax: 1-631-938-8127

 45-1 Ramsey Road, Shirley, NY 11967, USA

**SDS-PAGE**



**SPR**



 Tel: 1-631-559-9269 1-516-512-3133

 Email: [info@creative-biomart.com](mailto:info@creative-biomart.com)  Fax: 1-631-938-8127

 45-1 Ramsey Road, Shirley, NY 11967, USA