

Active Recombinant Human FCGR2A Protein, His tagged

Cat. No. FCGR2A-03H Lot. No. (See product label)

SPECIFICATION

Product Overview	Recombinant human Fc gamma RIIA/CD32a (30-218 aa), fused to His-tag at C-terminus, was expressed in HEK293 cell and purified by using conventional chromatography techniques.
Species	Human
Source	HEK293
ProteinLength	30-218 aa
Description	This gene encodes one member of a family of immunoglobulin Fc receptor genes found on the surface of many immune response cells. The protein encoded by this gene is a cell surface receptor found on phagocytic cells such as macrophages and neutrophils, and is involved in the process of phagocytosis and clearing of immune complexes. Alternative splicing results in multiple transcript variants.
Form	Liquid
AASequence	SADSQAAAPPKAVLKLEPPWINVLQEDSVTLTCQGARSPESDSIQWFHNGNLIPTHT QPSYRFKANNNDSGEYTCQTGQTSLSDPVHLTVLSEWLVLQTPHLEFQEGETIMLR CHSWKDKPLVKVTFQNGKSQKFSRLDPTFSIPQANHSHSGDYHCTGNIGYTLFSS KPVITIVQVPSMGSSSPMGI
Molecular Mass	21.7 kDa

 Tel: 1-631-559-9269 1-516-512-3133

 Email: info@creative-biomart.com  Fax: 1-631-938-8127

 45-1 Ramsey Road, Shirley, NY 11967, USA

Bio-activity	Measured by its binding ability in a functional ELISA with Human IgG.
Endotoxin	< 1 EU/μg of protein determined by LAL method
Purity	> 95% by SDS-PAGE
Application	SDS-PAGE, Bioactivity
Note	For research use only. This product is not intended or approved for human, diagnostics or veterinary use.
Storage	Can be stored at +2 to +8 centigrade for 1 week. For long term storage, aliquot and store at -20 to -80 centigrade. Avoid repeated freezing and thawing cycles.
Storage Buffer	Phosphate-Buffered Saline (pH 7.4) containing 10% glycerol.
Concentration	1 mg/mL (determined by Absorbance at 280nm)

GENE INFORMATION

Gene Name	FCGR2A Fc gamma receptor IIa [Homo sapiens (human)]
Official Symbol	FCGR2A
Synonyms	FCGR2A; Fc gamma receptor IIa; CD32; FCG2; FcGR; CD32A; CDw32; FCGR2; IGFR2; FCGR2A1; FcgammaRIIa; low affinity immunoglobulin gamma Fc region receptor II-a; Fc fragment of IgG receptor IIa; Fc fragment of IgG, low affinity IIa, receptor (CD32); Fc gamma receptor RIIa3; Immunoglobulin G Fc receptor II; fc-gamma-RIIa; fcRII-a; igG Fc receptor II-a
Gene ID	2212

 Tel: 1-631-559-9269 1-516-512-3133

 Email: info@creative-biomart.com  Fax: 1-631-938-8127

 45-1 Ramsey Road, Shirley, NY 11967, USA

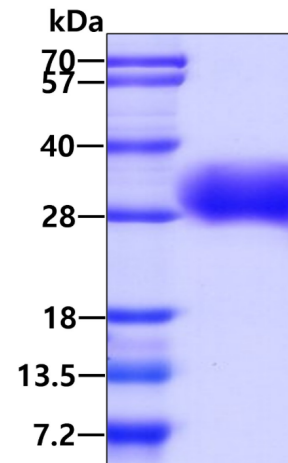
mRNA Refseq [NM_021642](#)

Protein Refseq [NP_067674](#)

MIM [146790](#)

UniProt ID [P12318](#)

SDS-PAGE



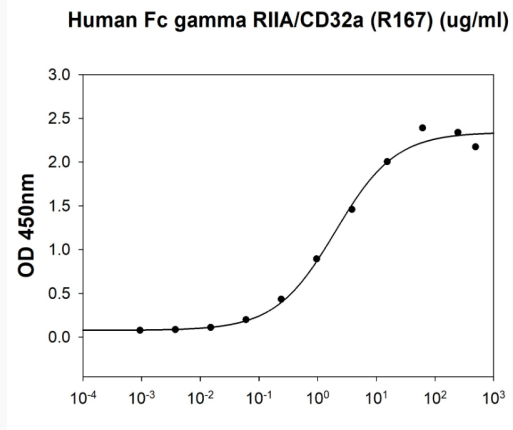
3 μ g by SDS-PAGE under reducing condition and visualized by coomassie blue stain

 Tel: 1-631-559-9269 1-516-512-3133


 Email: info@creative-biomart.com  Fax: 1-631-938-8127

 45-1 Ramsey Road, Shirley, NY 11967, USA

Biological Activity



Human Fc gamma RIIA/CD32a (R167) is coated at 10 µg/mL (100 µL/well) can bind Human IgG in a Functional ELISA assay.

 Tel: 1-631-559-9269 1-516-512-3133

 Email: info@creative-biomart.com  Fax: 1-631-938-8127

 45-1 Ramsey Road, Shirley, NY 11967, USA