

# Recombinant Full Length Human FCGR2A Protein, C-Flag-tagged

Cat. No. FCGR2A-1225HFL Lot. No. (See product label)

## SPECIFICATION

### Product Overview

Recombinant Full Length Human FCGR2A Protein, fused to Flag-tag at C-terminus, was expressed in Mammalian cells.

### Species

Human

### Source

Mammalian Cells

### Description

This gene encodes one member of a family of immunoglobulin Fc receptor genes found on the surface of many immune response cells. The protein encoded by this gene is a cell surface receptor found on phagocytic cells such as macrophages and neutrophils, and is involved in the process of phagocytosis and clearing of immune complexes. Alternative splicing results in multiple transcript variants.

### Form

25 mM Tris HCl, pH 7.3, 100 mM glycine, 10% glycerol.

### Molecular Mass

34.7 kDa

### AA Sequence

MTMETQMSQNVCPRNLLWLLQPLTVLLLLASADSQAAPPKAVLKLEPPWINVLQEDS  
 VTLTCQGARSPESD SIQWFHNGNLIPTHTQPSYRFKANNNDSGEYTCQTGQTSL  
 DPVHLTVLSEWLVLQTPHLEFQEGETIML RCHSWKDKPLVKVTFQNGKSQKFSRL  
 DPTFSIPQANHSHSGDYHCTGNIGYTLFSSKPVTITVQVPSMG SSSPMGIIVAVVIAT  
 AVAAIVAVALIYCRKKRISANSTDPVKAQFEPGRQMIARKRQLEETNNDY  
 ETADGGYMTLNPRAPTDDDKNIYLTLPNDHVNSNTRTRPLEQKLISEEDLAANDIL  
 DYKDDDDKV

 Tel: 1-631-559-9269 1-516-512-3133

 Email: [info@creative-biomart.com](mailto:info@creative-biomart.com)  Fax: 1-631-938-8127

 45-1 Ramsey Road, Shirley, NY 11967, USA

<b>Purity</b>	> 80% as determined by SDS-PAGE and Coomassie blue staining.
<b>Stability</b>	Stable for 12 months from the date of receipt of the product under proper storage and handling conditions. Avoid repeated freeze-thaw cycles.
<b>Storage</b>	Store at -80 centigrade.
<b>Concentration</b>	>50 ug/mL as determined by microplate BCA method.
<b>Preparation</b>	Recombinant protein was captured through anti-DDK affinity column followed by conventional chromatography steps.
<b>Protein Families</b>	ES Cell Differentiation/IPS, Transmembrane
<b>Protein Pathways</b>	Fc gamma R-mediated phagocytosis, Systemic lupus erythematosus
<b>Full Length</b>	Full L.

## GENE INFORMATION

<b>Gene Name</b>	<a href="#">FCGR2A Fc gamma receptor IIa [ Homo sapiens (human) ]</a>
<b>Official Symbol</b>	<a href="#">FCGR2A</a>
<b>Synonyms</b>	CD32; FCG2; FcGR; CD32A; CDw32; FCGR2; IGFR2; FCGR2A1; FcgammaRIIa
<b>Gene ID</b>	<a href="#">2212</a>
<b>mRNA Refseq</b>	<a href="#">NM_021642.5</a>
<b>Protein Refseq</b>	<a href="#">NP_067674.2</a>

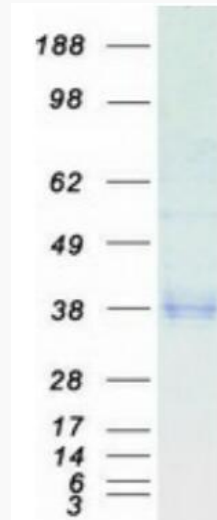
 Tel: 1-631-559-9269 1-516-512-3133

 Email: [info@creative-biomart.com](mailto:info@creative-biomart.com)  Fax: 1-631-938-8127

 45-1 Ramsey Road, Shirley, NY 11967, USA

**MIM** 146790

**UniProt ID** P12318



Coomassie blue staining of purified FCGR2A protein.

 Tel: 1-631-559-9269 1-516-512-3133

 Email: [info@creative-biomart.com](mailto:info@creative-biomart.com)  Fax: 1-631-938-8127

 45-1 Ramsey Road, Shirley, NY 11967, USA