

# Active Recombinant Human FCGR2A protein, His-tagged

**Cat. No.** FCGR2A-2618H    **Lot. No.** (See product label)

## SPECIFICATION

<b>Product Overview</b>	Recombinant Human Fc-gamma RIIa/CD32a(H167R) Protein is produced by HEK293 cells expression system. The target protein is expressed with sequence (Ala36-Ile218 (R167)) of human Fc gamma RIIA/CD32a (Accession #NP_001129691.1) fused with a 6xHis tag at the C-terminus.
<b>Species</b>	Human
<b>Source</b>	HEK293
<b>ProteinLength</b>	Ala36-Ile218 (R167)
<b>Form</b>	Lyophilized from a 0.22 µm filtered solution of PBS, pH 7.4.
<b>Bio-activity</b>	Measured by its binding ability in a functional ELISA. Immobilized recombinant human CD32a at 1 µg/mL (100 µL/well) can bind biotinylated human IgG1 with a linear range of 30-250 ng/mL.
<b>Molecular Mass</b>	32-38 kDa
<b>Endotoxin</b>	< 0.1 EU/µg of the protein by LAL method.
<b>Purity</b>	> 97% by SDS-PAGE.
<b>Storage</b>	Store the lyophilized protein at -20°C to -80 °C for long term. After reconstitution, the protein solution is stable at -20 °C for 3 months, at 2-8 °C for

 Tel: 1-631-559-9269    1-516-512-3133

 Email: [info@creative-biomart.com](mailto:info@creative-biomart.com)     Fax: 1-631-938-8127

 45-1 Ramsey Road, Shirley, NY 11967, USA

up to 1 week.

**Reconstitution** Reconstitute to a concentration of 0.1-0.5 mg/mL in sterile distilled water.

## GENE INFORMATION

**Gene Name** FCGR2A Fc fragment of IgG, low affinity IIa, receptor (CD32) [ Homo sapiens ]

**Official Symbol** FCGR2A

**Synonyms** FCGR2A; Fc fragment of IgG, low affinity IIa, receptor (CD32); Fc fragment of IgG, low affinity IIa, receptor for (CD32) , FCG2, FCGR2, FCGR2A1; low affinity immunoglobulin gamma Fc region receptor II-a; CD32; CD32A; CDw32; IGFR2; Immunoglobulin G Fc receptor II; fcRII-a; fc-gamma-RIIa; fc-gamma RII-a; igG Fc receptor II-a; FCG2; FcGR; FCGR2; FCGR2A1; MGC23887; MGC30032;

**Gene ID** 2212

**mRNA Refseq** NM\_001136219

**Protein Refseq** NP\_001129691

**MIM** 146790

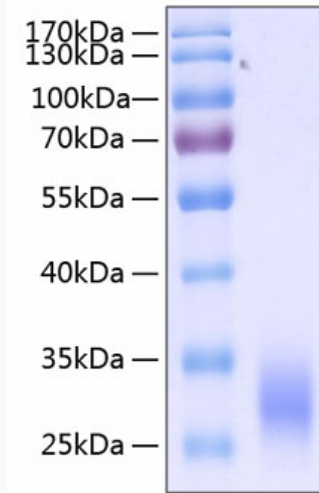
**UniProt ID** P12318

 Tel: 1-631-559-9269 1-516-512-3133

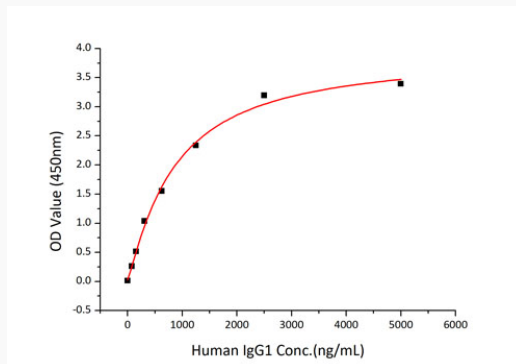
 Email: [info@creative-biomart.com](mailto:info@creative-biomart.com)  Fax: 1-631-938-8127

 45-1 Ramsey Road, Shirley, NY 11967, USA

**SDS-PAGE**



**Bio-activity**



 Tel: 1-631-559-9269 1-516-512-3133

 Email: [info@creative-biomart.com](mailto:info@creative-biomart.com)  Fax: 1-631-938-8127

 45-1 Ramsey Road, Shirley, NY 11967, USA