

Recombinant Human FCGR2A protein, His-Avi-tagged

Cat. No. FCGR2A-334H Lot. No. (See product label)

SPECIFICATION

Product Overview	Recombinant Human FCGR2A protein(P08637-1)(Gly17-Gln208(F176)), fused with C-terminal His and Avi tag, was expressed in HEK293.
Species	Human
Source	HEK293
ProteinLength	Gly17-Gln208(F176)
Tag	C-His-Avi
Form	Lyophilized from 0.22µm filtered solution in PBS (pH 7.4). Normally 5% trehalose is added as protectant before lyophilization.
Bio-activity	Immobilized Human Fc gamma RIIIA (F176) , His Tag at 2µg/ml (100µl/well) on the plate. Dose response curve for Anti-Fc gamma RIIIA Antibody, hFc Tag with the EC50 of 10.1ng/ml determined by ELISA.
Molecular Mass	The protein has a predicted MW of 24.7 kDa. Due to glycosylation, the protein migrates to 48-58 kDa based on Tris-Bis PAGE result.
Endotoxin	Less than 1EU per µg by the LAL method.
Purity	> 95% as determined by Tris-Bis PAGE; > 95% as determined by HPLC

 Tel: 1-631-559-9269 1-516-512-3133

 Email: info@creative-biomart.com  Fax: 1-631-938-8127

 45-1 Ramsey Road, Shirley, NY 11967, USA

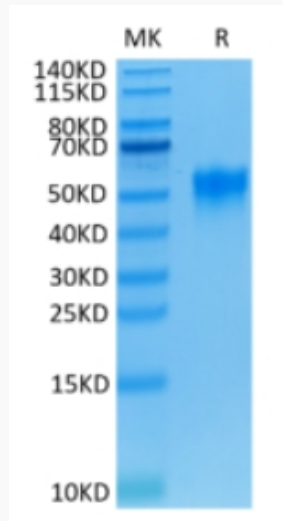
Storage	Reconstituted protein stable at -80°C for 12 months, 4°C for 1 week. Use a manual defrost freezer and avoid repeated freeze-thaw cycles.
Reconstitution	Centrifuge tubes before opening. Reconstituting to a concentration more than 100 µg/ml is recommended. Dissolve the lyophilized protein in distilled water.
GENE INFORMATION	
Gene Name	FCGR2A Fc fragment of IgG, low affinity IIa, receptor (CD32) [Homo sapiens]
Official Symbol	FCGR2A
Synonyms	FCGR2A; Fc fragment of IgG, low affinity IIa, receptor (CD32); Fc fragment of IgG, low affinity IIa, receptor for (CD32) , FCG2, FCGR2, FCGR2A1; low affinity immunoglobulin gamma Fc region receptor II-a; CD32; CD32A; CDw32; IGFR2; Immunoglobulin G Fc receptor II; fcRII-a; fc-gamma-RIIa; fc-gamma RII-a; igG Fc receptor II-a; FCG2; FcGR; FCGR2; FCGR2A1; MGC23887; MGC30032;
Gene ID	2212
mRNA Refseq	NM_001136219
Protein Refseq	NP_001129691
MIM	146790
UniProt ID	P12318

 Tel: 1-631-559-9269 1-516-512-3133

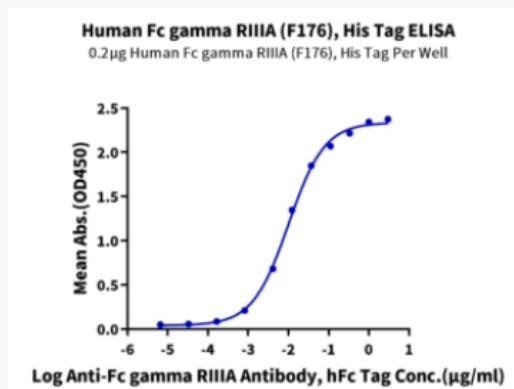
 Email: info@creative-biomart.com  Fax: 1-631-938-8127

 45-1 Ramsey Road, Shirley, NY 11967, USA

Tris-Bis PAGE



ELISA Data



 Tel: 1-631-559-9269 1-516-512-3133

 Email: info@creative-biomart.com  Fax: 1-631-938-8127

 45-1 Ramsey Road, Shirley, NY 11967, USA