

Recombinant Human FCGR2A Protein, GST-tagged

Cat. No. FCGR2A-3992H **Lot. No.** (See product label)

SPECIFICATION

Product Overview	Human FCGR2A partial ORF (AAH20823, 46 a.a. - 150 a.a.) recombinant protein with GST-tag at N-terminal.
Species	Human
Source	Wheat Germ
Description	This gene encodes one member of a family of immunoglobulin Fc receptor genes found on the surface of many immune response cells. The protein encoded by this gene is a cell surface receptor found on phagocytic cells such as macrophages and neutrophils, and is involved in the process of phagocytosis and clearing of immune complexes. Alternative splicing results in multiple transcript variants. [provided by RefSeq, Oct 2008]
Molecular Mass	37.29 kDa
AA Sequence	PPWINVLQEDSVTLTCQGARSPESDSIQWFHNGNLIPTHTQPSYRFKANNNDGGEY TCQTGQTSLSDPVHLTVLSEWLVLQTPHLEFQEGETIMLRCHSWKDKPL
Applications	Enzyme-linked Immunoabsorbent Assay Western Blot (Recombinant protein) Antibody Production Protein Array
Notes	Best use within three months from the date of receipt of this protein.

 Tel: 1-631-559-9269 1-516-512-3133

 Email: info@creative-biomart.com  Fax: 1-631-938-8127

 45-1 Ramsey Road, Shirley, NY 11967, USA

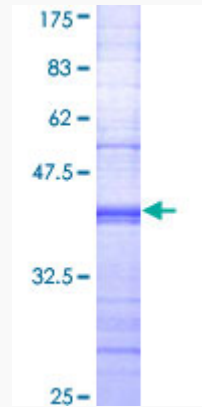
Storage	Store at -80 centigrade. Aliquot to avoid repeated freezing and thawing.
Storage Buffer	50 mM Tris-HCl, 10 mM reduced Glutathione, pH=8.0 in the elution buffer.
GENE INFORMATION	
Gene Name	FCGR2A Fc fragment of IgG, low affinity IIa, receptor (CD32) [Homo sapiens]
Official Symbol	FCGR2A
Synonyms	FCGR2A; Fc fragment of IgG, low affinity IIa, receptor (CD32); Fc fragment of IgG, low affinity IIa, receptor for (CD32) , FCG2, FCGR2, FCGR2A1; low affinity immunoglobulin gamma Fc region receptor II-a; CD32; CD32A; CDw32; IGFR2; Immunoglobulin G Fc receptor II; fcRII-a; fc-gamma-RIIa; fc-gamma RII-a; igG Fc receptor II-a; FCG2; FcGR; FCGR2; FCGR2A1; MGC23887; MGC30032;
Gene ID	2212
mRNA Refseq	NM_001136219
Protein Refseq	NP_001129691
MIM	146790
UniProt ID	P12318

 Tel: 1-631-559-9269 1-516-512-3133

 Email: info@creative-biomart.com  Fax: 1-631-938-8127

 45-1 Ramsey Road, Shirley, NY 11967, USA

**Quality Control
Testing**



12.5% SDS-PAGE Stained with Coomassie Blue.

 Tel: 1-631-559-9269 1-516-512-3133

 Email: info@creative-biomart.com  Fax: 1-631-938-8127

 45-1 Ramsey Road, Shirley, NY 11967, USA