

# Recombinant Human FCGR2A Protein (Met1-Ile218), C-His tagged

Cat. No. FCGR2A-4108H Lot. No. (See product label)

## SPECIFICATION

<b>Product Overview</b>	Recombinant human FCGR2A (Met1-Ile218) fused with the C-terminal His tag was expressed in Mammalian cells.
<b>Species</b>	Human
<b>Source</b>	Mammalian Cells
<b>ProteinLength</b>	Met1-Ile218
<b>Form</b>	Lyophilized powder/frozen liquid
<b>Molecular Mass</b>	24.09 kDa
<b>Endotoxin</b>	< 1.0 EU/μg of the protein as determined by the LAL method.
<b>Purity</b>	>90% as determined by SDS-PAGE.
<b>Notes</b>	For research use only.
<b>Storage</b>	Use a manual defrost freezer and avoid repeated freeze thaw cycles. Store at 2 to 8 centigrade for one week. Store at -20 to -80 centigrade for twelve months from the date of receipt.
<b>Storage Buffer</b>	Supplied as solution form in PBS or lyophilized from PBS.

 Tel: 1-631-559-9269 1-516-512-3133

 Email: [info@creative-biomart.com](mailto:info@creative-biomart.com)  Fax: 1-631-938-8127

 45-1 Ramsey Road, Shirley, NY 11967, USA

**Reconstitution** Reconstitute in sterile water for a stock solution.

**Shipping** They are shipped out with dry ice/blue ice unless customers require otherwise.

## GENE INFORMATION

**Gene Name** FCGR2A Fc fragment of IgG, low affinity IIa, receptor (CD32) [ Homo sapiens (human) ]

**Official Symbol** FCGR2A

**Synonyms** FCGR2A; Fc fragment of IgG, low affinity IIa, receptor (CD32); Fc fragment of IgG, low affinity IIa, receptor for (CD32), FCG2, FCGR2, FCGR2A1; low affinity immunoglobulin gamma Fc region receptor II-a; CD32; CD32A; CDw32; IGFR2; Immunoglobulin G Fc receptor II; fcRII-a; fc-gamma-RIIa; fc-gamma RII-a; igG Fc receptor II-a; FCG2; FcGR; FCGR2; FCGR2A1; MGC23887; MGC30032;

**Gene ID** 2212

**mRNA Refseq** NM\_001136219

**Protein Refseq** NP\_001129691

**MIM** 146790

**UniProt ID** P12318

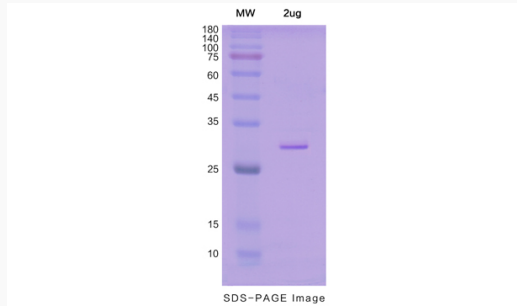
 Tel: 1-631-559-9269 1-516-512-3133

 Email: [info@creative-biomart.com](mailto:info@creative-biomart.com)  Fax: 1-631-938-8127

 45-1 Ramsey Road, Shirley, NY 11967, USA



SDS-PAGE



Tel: 1-631-559-9269 1-516-512-3133

Email: [info@creative-biomart.com](mailto:info@creative-biomart.com) Fax: 1-631-938-8127

45-1 Ramsey Road, Shirley, NY 11967, USA