

Recombinant Full Length Human FCGR2B Protein, C-Flag-tagged

Cat. No. FCGR2B-1077HFL Lot. No. (See product label)

SPECIFICATION

Product Overview	Recombinant Full Length Human FCGR2B Protein, fused to Flag-tag at C-terminus, was expressed in Mammalian cells.
Species	Human
Source	Mammalian Cells
Description	The protein encoded by this gene is a low affinity receptor for the Fc region of immunoglobulin gamma complexes. The encoded protein is involved in the phagocytosis of immune complexes and in the regulation of antibody production by B-cells. Variations in this gene may increase susceptibility to systemic lupus erythematosus (SLE). Several transcript variants encoding different isoforms have been found for this gene.
Form	25 mM Tris HCl, pH 7.3, 100 mM glycine, 10% glycerol.
Molecular Mass	33.8 kDa
AA Sequence	MGILSFLPVLATESDWADCKSPQPWGHMLLWTAVLFLAPVAGTPAAPPKAVLKLEP QWINVLQEDSVTLT CRGTHSPESDSIQWFHNGNLIPTHTQPSYRFKANNNDSGEYT CQTGQTSLSDPVHLTVLSEWLVLQTPHP EFQEGETIVLRCHSWKDKPLVKVTTFFQN GKSKKFSRSDPNFNSIPQANHSHSGDYHCTGNIGYTLYSSKPV TITVQAPSSSPMGII VAVVTGIAVAIVAIVVALIYCRKKRISALPGYPECREMGETLPEKPANPTNPDE ADKVGAEANTITYSLLMHPDALEEPDQNRITRTRPLEQKLISEEDLAANDILDYKDDD

 Tel: 1-631-559-9269 1-516-512-3133

 Email: info@creative-biomart.com  Fax: 1-631-938-8127

 45-1 Ramsey Road, Shirley, NY 11967, USA

	DKV
Purity	> 80% as determined by SDS-PAGE and Coomassie blue staining.
Stability	Stable for 12 months from the date of receipt of the product under proper storage and handling conditions. Avoid repeated freeze-thaw cycles.
Storage	Store at -80 centigrade.
Concentration	>50 ug/mL as determined by microplate BCA method.
Preparation	Recombinant protein was captured through anti-DDK affinity column followed by conventional chromatography steps.
Protein Families	ES Cell Differentiation/IPS, Transmembrane
Protein Pathways	B cell receptor signaling pathway, Fc gamma R-mediated phagocytosis, Systemic lupus erythematosus
Full Length	Full L.
GENE INFORMATION	
Gene Name	FCGR2B Fc gamma receptor IIb [Homo sapiens (human)]
Official Symbol	FCGR2B
Synonyms	CD32; FCG2; CD32B; FCGR2; IGFR2; FCGR2C; FcGRIIB; FcRII-c; FcgammaRIIb
Gene ID	2213

 Tel: 1-631-559-9269 1-516-512-3133

 Email: info@creative-biomart.com  Fax: 1-631-938-8127

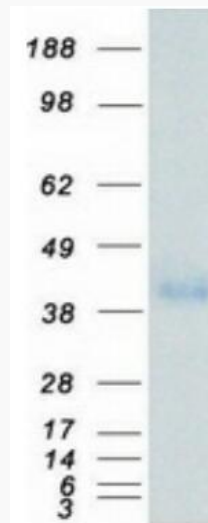
 45-1 Ramsey Road, Shirley, NY 11967, USA

mRNA Refseq [NM_001002275.3](#)

Protein Refseq [NP_001002275.1](#)

MIM [604590](#)

UniProt ID [P31994](#)



Coomassie blue staining of purified FCGR2B protein.

 Tel: 1-631-559-9269 1-516-512-3133

 Email: info@creative-biomart.com  Fax: 1-631-938-8127

 45-1 Ramsey Road, Shirley, NY 11967, USA