

# Recombinant Human FCGR2B Protein, Myc/DDK-tagged, C13 and N15-labeled

**Cat. No.** FCGR2B-1800H    **Lot. No.** (See product label)

## SPECIFICATION

<b>Product Overview</b>	FCGR2B MS Standard C13 and N15-labeled recombinant protein (NP_001002273) with a C-terminal MYC/DDK tag, was expressed in HEK293 cells.
<b>Species</b>	Human
<b>Source</b>	HEK293
<b>Description</b>	The protein encoded by this gene is a low affinity receptor for the Fc region of immunoglobulin gamma complexes. The encoded protein is involved in the phagocytosis of immune complexes and in the regulation of antibody production by B-cells. Variations in this gene may increase susceptibility to systemic lupus erythematosus (SLE). Several transcript variants encoding different isoforms have been found for this gene.
<b>Molecular Mass</b>	31.7 kDa
<b>AA Sequence</b>	MGILSFLPVLATESDWADCKSPQPWGHMLLWTAVLFLAPVAGTPAPPKAVLKLEPQ WINVLQEDSVTLTCRGTHSPESDSIQWFHNGNLIPTHTQPSYRFKANNNDSGEYTC QTGQTSLSDPVHLTVLSEWLVLQTPHLEFQEGETIVLRCHSWKDKPLVKVTFQNG KSKKFSRSDPNFSIPQANHSHSGDYHCTGNIGYTYSSKPVITVQAPSSSPMGIIVA VVTGIAVA AIVAAVVALIYCRKKRISANPTNPDEADKVGAEITYSLLMHPDALEEPD DQNRITRTRPLEQKLISEEDLAANDILDYKDDDDKV
<b>Purity</b>	> 80% as determined by SDS-PAGE and Coomassie blue staining

 Tel: 1-631-559-9269    1-516-512-3133

 Email: [info@creative-biomart.com](mailto:info@creative-biomart.com)     Fax: 1-631-938-8127

 45-1 Ramsey Road, Shirley, NY 11967, USA

<b>Stability</b>	Stable for 3 months from receipt of products under proper storage and handling conditions.
<b>Storage</b>	Store at -80 centigrade. Avoid repeated freeze-thaw cycles.
<b>Concentration</b>	50 µg/mL as determined by BCA
<b>Storage Buffer</b>	100 mM glycine, 25 mM Tris-HCl, pH 7.3.

## GENE INFORMATION

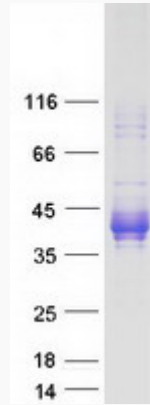
<b>Gene Name</b>	FCGR2B Fc fragment of IgG receptor IIb [ Homo sapiens (human) ]
<b>Official Symbol</b>	FCGR2B
<b>Synonyms</b>	FCGR2B; Fc fragment of IgG, low affinity IIb, receptor (CD32); Fc fragment of IgG, low affinity IIb, receptor for (CD32), FCG2, FCGR2; low affinity immunoglobulin gamma Fc region receptor II-b; CD32; CD32B; CDw32; fcRII-b; Fc gamma RIIb; fc-gamma-RIIb; fc-gamma RII-b; igG Fc receptor II-b; Fc fragment of IgG, low affinity II, receptor for (CD32); Fc fragment of IgG, low affinity IIb, receptor for (CD32); FCG2; FCGR2; IGFR2;
<b>Gene ID</b>	2213
<b>mRNA Refseq</b>	NM_001002273
<b>Protein Refseq</b>	NP_001002273
<b>MIM</b>	604590
<b>UniProt ID</b>	P31994

 Tel: 1-631-559-9269 1-516-512-3133

 Email: [info@creative-biomart.com](mailto:info@creative-biomart.com)  Fax: 1-631-938-8127

 45-1 Ramsey Road, Shirley, NY 11967, USA

**SDS-PAGE**



 Tel: 1-631-559-9269 1-516-512-3133

 Email: [info@creative-biomart.com](mailto:info@creative-biomart.com)  Fax: 1-631-938-8127

 45-1 Ramsey Road, Shirley, NY 11967, USA