

# Recombinant Human FCGR2B Protein (Thr43-Pro217), C-His tagged

**Cat. No.** FCGR2B-2595H    **Lot. No.** (See product label)

## SPECIFICATION

<b>Product Overview</b>	Recombinant human FCGR2B (Thr43-Pro217) protein fused with the C-terminal His tag was expressed in Mammalian cells.
<b>Species</b>	Human
<b>Source</b>	Mammalian Cells
<b>ProteinLength</b>	Thr43-Pro217
<b>Molecular Mass</b>	19.25 kDa
<b>Purity</b>	>90 % as determined by SDS-PAGE.
<b>Notes</b>	For research use only.
<b>Storage</b>	Use a manual defrost freezer and avoid repeated freeze thaw cycles. Store at 2 to 8 centigrade for one week. Store at -20 to -80 centigrade for twelve months from the date of receipt.
<b>Storage Buffer</b>	Supplied as solution form in PBS or lyophilized from PBS.
<b>Reconstitution</b>	Reconstitute in sterile water for a stock solution.
<b>Shipping</b>	In general, proteins are provided as lyophilized powder/frozen liquid. They are

 Tel: 1-631-559-9269    1-516-512-3133

 Email: [info@creative-biomart.com](mailto:info@creative-biomart.com)     Fax: 1-631-938-8127

 45-1 Ramsey Road, Shirley, NY 11967, USA

shipped out with dry ice/blue ice unless customers require otherwise.

## GENE INFORMATION

<b>Gene Name</b>	FCGR2B Fc fragment of IgG, low affinity IIb, receptor (CD32) [ Homo sapiens (human) ]
<b>Official Symbol</b>	FCGR2B
<b>Synonyms</b>	FCGR2B; Fc fragment of IgG, low affinity IIb, receptor (CD32); Fc fragment of IgG, low affinity IIb, receptor for (CD32), FCG2, FCGR2; low affinity immunoglobulin gamma Fc region receptor II-b; CD32; CD32B; CDw32; fcRII-b; Fc gamma RIIb; fc-gamma-RIIb; fc-gamma RII-b; igG Fc receptor II-b; Fc fragment of IgG, low affinity II, receptor for (CD32); Fc fragment of IgG, low affinity IIb, receptor for (CD32); FCG2; FCGR2; IGFR2;
<b>Gene ID</b>	2213
<b>mRNA Refseq</b>	NM_001002273
<b>Protein Refseq</b>	NP_001002273
<b>MIM</b>	604590
<b>UniProt ID</b>	P31994

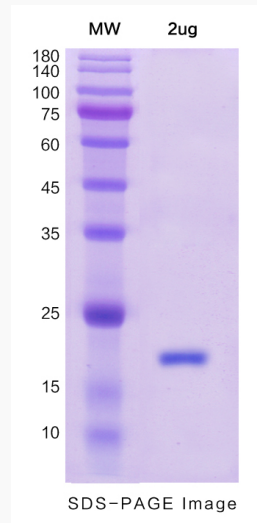
 Tel: 1-631-559-9269 1-516-512-3133

 Email: [info@creative-biomart.com](mailto:info@creative-biomart.com)  Fax: 1-631-938-8127

 45-1 Ramsey Road, Shirley, NY 11967, USA



SDS-PAGE



Tel: 1-631-559-9269 1-516-512-3133

Email: [info@creative-biomart.com](mailto:info@creative-biomart.com) Fax: 1-631-938-8127

45-1 Ramsey Road, Shirley, NY 11967, USA