

Recombinant Human FCGR2B protein, His-Avi-tagged

Cat. No. FCGR2B-323H Lot. No. (See product label)

SPECIFICATION

Product Overview	Recombinant Human FCGR2B protein(P31994-1)(Ala46-Pro217), fused with C-terminal His and Avi tag, was expressed in HEK293.
Species	Human
Source	HEK293
ProteinLength	Ala46-Pro217
Tag	C-His-Avi
Form	Lyophilized from 0.22µm filtered solution in PBS (pH 7.4). Normally 8% trehalose is added as protectant before lyophilization.
Bio-activity	Rituximab captured on CM5 Chip via Protein A can bind Human Fc gamma RIIB, His Tag with an affinity constant of 3.46 µM as determined in SPR assay (Biacore T200).
Molecular Mass	The protein has a predicted MW of 22.5 kDa. Due to glycosylation, the protein migrates to 32-37 kDa based on Tris-Bis PAGE result.
Endotoxin	Less than 1EU per µg by the LAL method.
Purity	> 95% as determined by Tris-Bis PAGE; > 95% as determined by HPLC
Storage	Reconstituted protein stable at -80°C for 12 months, 4°C for 1 week. Use a manual

 Tel: 1-631-559-9269 1-516-512-3133

 Email: info@creative-biomart.com  Fax: 1-631-938-8127

 45-1 Ramsey Road, Shirley, NY 11967, USA

defrost freezer and avoid repeated freeze-thaw cycles.

Reconstitution

Centrifuge tubes before opening. Reconstituting to a concentration more than 100 µg/ml is recommended. Dissolve the lyophilized protein in distilled water.

GENE INFORMATION

Gene Name [FCGR2B Fc fragment of IgG, low affinity IIb, receptor \(CD32\) \[Homo sapiens \]](#)

Official Symbol [FCGR2B](#)

Synonyms

FCGR2B; Fc fragment of IgG, low affinity IIb, receptor (CD32); Fc fragment of IgG, low affinity IIb, receptor for (CD32) , FCG2, FCGR2; low affinity immunoglobulin gamma Fc region receptor II-b; CD32; CD32B; CDw32; fcRII-b; Fc gamma RIIb; fc-gamma-RIIb; fc-gamma RII-b; igG Fc receptor II-b; Fc fragment of IgG, low affinity II, receptor for (CD32); Fc fragment of IgG, low affinity IIb, receptor for (CD32); FCG2; FCGR2; IGFR2;

Gene ID [2213](#)

mRNA Refseq [NM_001002273](#)

Protein Refseq [NP_001002273](#)

MIM [604590](#)

UniProt ID [P31994](#)

 Tel: 1-631-559-9269 1-516-512-3133

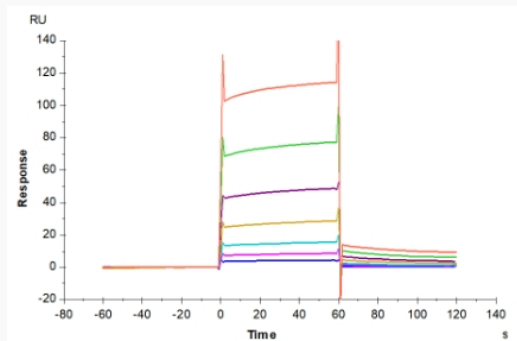
 Email: info@creative-biomart.com  Fax: 1-631-938-8127

 45-1 Ramsey Road, Shirley, NY 11967, USA

Tris-Bis PAGE



ELISA Data



 Tel: 1-631-559-9269 1-516-512-3133

 Email: info@creative-biomart.com  Fax: 1-631-938-8127

 45-1 Ramsey Road, Shirley, NY 11967, USA