

Recombinant Human FCGR2B Protein, Myc/DDK-tagged, C13 and N15-labeled

Cat. No. FCGR2B-3789H **Lot. No.** (See product label)

SPECIFICATION

Product Overview

FCGR2B MS Standard C13 and N15-labeled recombinant protein (NP_001002275) with a C-terminal MYC/DDK tag, was expressed in HEK293 cells.

Species

Human

Source

HEK293

Description

The protein encoded by this gene is a low affinity receptor for the Fc region of immunoglobulin gamma complexes. The encoded protein is involved in the phagocytosis of immune complexes and in the regulation of antibody production by B-cells. Variations in this gene may increase susceptibility to systemic lupus erythematosus (SLE). Several transcript variants encoding different isoforms have been found for this gene.

Molecular Mass

33.8 kDa

AA Sequence

MGILSFLPVLATESDWADCKSPQPWGHMLLWTAVLFLAPVAGTPAAPPKAVLKLEP
 QWINVLQEDSVTLTCRGTHSPESDSIQWFHNGNLIPTHTQPSYRFKANNNDSGEYT
 CQTGQTSLSDPVHLTVLSEWLVLQTPHPEFQEGETIVLRCHSWKDKPLVKVTFQK
 GKSKKFSRSDPNFSIPQANHSHSGDYHCTGNIGYTYLSSKPVTITVQAPSSSPMGIIV
 AVVTGIAVAAIVA AVVALIYCRKKRISALPGYPECREMGETLPEKPANPTNPDEADKV
 GAENTITYSLLMHPDALEEPDDQNRITRTRPLEQKLISEEDLAANDILDYKDDDDKV

Purity

> 80% as determined by SDS-PAGE and Coomassie blue staining

 Tel: 1-631-559-9269 1-516-512-3133

 Email: info@creative-biomart.com  Fax: 1-631-938-8127

 45-1 Ramsey Road, Shirley, NY 11967, USA

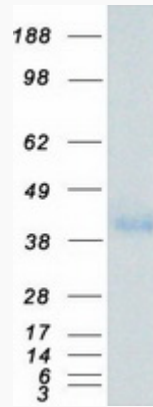
Stability	Stable for 3 months from receipt of products under proper storage and handling conditions.
Storage	Store at -80 centigrade. Avoid repeated freeze-thaw cycles.
Concentration	50 µg/mL as determined by BCA
Storage Buffer	100 mM glycine, 25 mM Tris-HCl, pH 7.3.
GENE INFORMATION	
Gene Name	FCGR2B Fc fragment of IgG receptor IIb [Homo sapiens (human)]
Official Symbol	FCGR2B
Synonyms	FCGR2B; Fc fragment of IgG, low affinity IIb, receptor (CD32); Fc fragment of IgG, low affinity IIb, receptor for (CD32), FCG2, FCGR2; low affinity immunoglobulin gamma Fc region receptor II-b; CD32; CD32B; CDw32; fcRII-b; Fc gamma RIIb; fc-gamma-RIIb; fc-gamma RII-b; igG Fc receptor II-b; Fc fragment of IgG, low affinity II, receptor for (CD32); Fc fragment of IgG, low affinity IIb, receptor for (CD32); FCG2; FCGR2; IGFR2;
Gene ID	2213
mRNA Refseq	NM_001002275
Protein Refseq	NP_001002275
MIM	604590
UniProt ID	P31994

 Tel: 1-631-559-9269 1-516-512-3133

 Email: info@creative-biomart.com  Fax: 1-631-938-8127

 45-1 Ramsey Road, Shirley, NY 11967, USA

SDS-PAGE



 Tel: 1-631-559-9269 1-516-512-3133

 Email: info@creative-biomart.com  Fax: 1-631-938-8127

 45-1 Ramsey Road, Shirley, NY 11967, USA