

Active Recombinant Human FCGR2B Protein, His-tagged

Cat. No. FCGR2B-650H Lot. No. (See product label)

SPECIFICATION

Product Overview	Recombinant Human FCGR2B protein(Ala46-Pro217), fused with C-terminal His tag, was expressed in HEK293.
Species	Human
Source	HEK293
ProteinLength	Ala46-Pro217
Tag	C-His
Form	Liquid in sterile PBS, pH7.4.
Molecular Mass	The protein has a calculated MW of 21 kDa.
Endotoxin	<1.0EU per 1µg (determined by the LAL method).
Purity	> 90 % as determined by SDS-PAGE.
Storage	Store it under sterile conditions at -20 to -80°C. It is recommended that the protein be aliquoted for optimal storage. Avoid repeated freeze-thaw cycles.
Concentration	1.0 mg/ml. Centrifuge the vial at 4°C before opening to recover the entire contents.
Reconstitution	It is recommended that sterile water be added to the vial to prepare a stock solution of

 Tel: 1-631-559-9269 1-516-512-3133

 Email: info@creative-biomart.com  Fax: 1-631-938-8127

 45-1 Ramsey Road, Shirley, NY 11967, USA

0.2 ug/ul. Centrifuge the vial at 4°C before opening to recover the entire contents.

AA Sequence

APPKAVLKLEPQWINVLQEDSVTLTCRGTHTSPESDSIQWFHNGNLIPTHTQPSYRFK
 ANNNDSGEYTCQTGQTSLSDPVHLTVLSEWLVLQTPHLEFQEGETIVLRCHSWKDK
 PLVKVTFQNGKSKKFSRSDPNFSIPQANHSHSGDYHCTGNIGYTLYSSKPVTITVQ
 APAHHHHHHHHHH

GENE INFORMATION

Gene Name FCGR2B Fc fragment of IgG, low affinity IIb, receptor (CD32) [Homo sapiens]

Official Symbol FCGR2B

Synonyms

FCGR2B; Fc fragment of IgG, low affinity IIb, receptor (CD32); Fc fragment of IgG, low affinity IIb, receptor for (CD32) , FCG2, FCGR2; low affinity immunoglobulin gamma Fc region receptor II-b; CD32; CD32B; CDw32; fcRII-b; Fc gamma RIIb; fc-gamma-RIIb; fc-gamma RII-b; igG Fc receptor II-b; Fc fragment of IgG, low affinity II, receptor for (CD32); Fc fragment of IgG, low affinity IIb, receptor for (CD32); FCG2; FCGR2; IGFR2;

Gene ID 2213

mRNA Refseq NM_001002273

Protein Refseq NP_001002273

MIM 604590

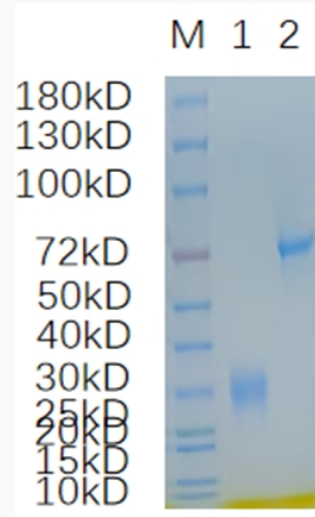
UniProt ID P31994

 Tel: 1-631-559-9269 1-516-512-3133

 Email: info@creative-biomart.com  Fax: 1-631-938-8127

 45-1 Ramsey Road, Shirley, NY 11967, USA

SDS-PAGE



Lane 1: FCGR2B-650H; Lane 2: BSA

 Tel: 1-631-559-9269 1-516-512-3133

 Email: info@creative-biomart.com  Fax: 1-631-938-8127

 45-1 Ramsey Road, Shirley, NY 11967, USA