

## Active Recombinant Human FCGR2B Protein, His-tagged

Cat. No. FCGR2B-6532H Lot. No. (See product label)

### SPECIFICATION

<b>Product Overview</b>	Recombinant Human FCGR2B Protein(Ala46-Pro217), fused with His tag, was expressed in HEK293.
<b>Species</b>	Human
<b>Source</b>	HEK293
<b>ProteinLength</b>	Ala46-Pro217
<b>Form</b>	Lyophilized from 0.22 µm filtered solution in PBS, pH7.4.
<b>Bio-activity</b>	When Recombinant Human Fc-gamma RII-bCD32b/His Protein is immobilized at 2µg/mL (100 µ/well), the concentration of Recombinant Anti-Human CD32b antibody that produces 50% of the optimal binding response is approximately 2ug/ml.
<b>Molecular Mass</b>	The protein has a calculated MW of 21kDa.The reducing (R) heterodimer protein migrates as 30-40 kDa due to glycosylation
<b>Endotoxin</b>	<1EU/mg
<b>Purity</b>	SDS-PAGE>95%SEC>95%
<b>Storage</b>	Store at -20°C.
<b>Reconstitution</b>	It is recommended that sterile water be added to the vial to prepare a stock solution of

 Tel: 1-631-559-9269 1-516-512-3133

 Email: [info@creative-biomart.com](mailto:info@creative-biomart.com)  Fax: 1-631-938-8127

 45-1 Ramsey Road, Shirley, NY 11967, USA

0.2 ug/ul. Centrifuge the vial at 4°C before opening to recover the entire contents.

## GENE INFORMATION

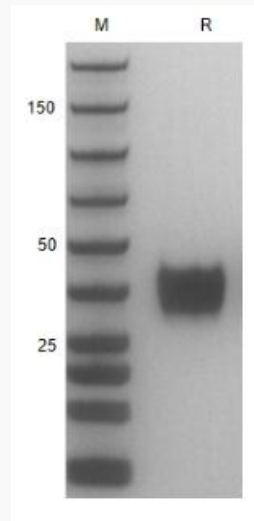
<b>Gene Name</b>	FCGR2B Fc fragment of IgG, low affinity IIb, receptor (CD32) [ Homo sapiens ]
<b>Official Symbol</b>	FCGR2B
<b>Synonyms</b>	FCGR2B; Fc fragment of IgG, low affinity IIb, receptor (CD32); Fc fragment of IgG, low affinity IIb, receptor for (CD32) , FCG2, FCGR2; low affinity immunoglobulin gamma Fc region receptor II-b; CD32; CD32B; CDw32; fcRII-b; Fc gamma RIIb; fc-gamma-RIIb; fc-gamma RII-b; igG Fc receptor II-b; Fc fragment of IgG, low affinity II, receptor for (CD32); Fc fragment of IgG, low affinity IIb, receptor for (CD32); FCG2; FCGR2; IGFR2;
<b>Gene ID</b>	2213
<b>mRNA Refseq</b>	NM_001002273
<b>Protein Refseq</b>	NP_001002273
<b>MIM</b>	604590
<b>UniProt ID</b>	P31994

 Tel: 1-631-559-9269 1-516-512-3133

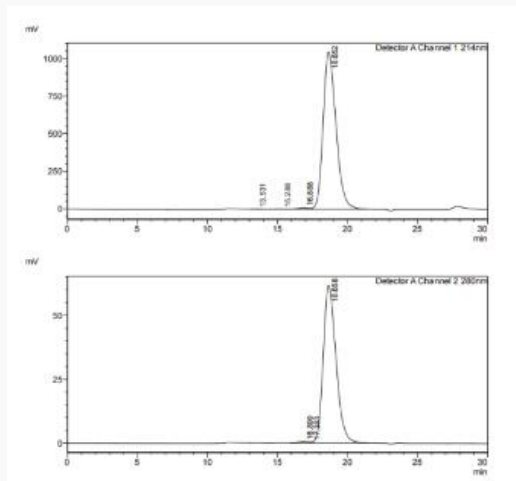
 Email: [info@creative-biomart.com](mailto:info@creative-biomart.com)  Fax: 1-631-938-8127

 45-1 Ramsey Road, Shirley, NY 11967, USA

**SDS-PAGE**



**SDS-HPLC**



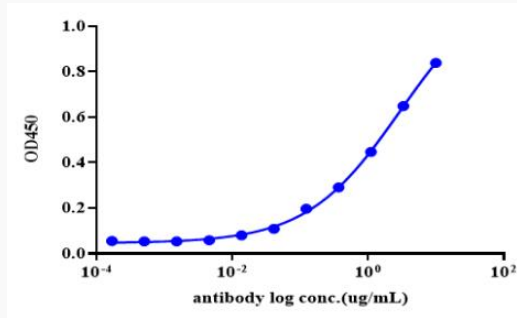
 Tel: 1-631-559-9269 1-516-512-3133

 Email: [info@creative-biomart.com](mailto:info@creative-biomart.com)  Fax: 1-631-938-8127

 45-1 Ramsey Road, Shirley, NY 11967, USA



ELISA



Tel: 1-631-559-9269 1-516-512-3133

Email: [info@creative-biomart.com](mailto:info@creative-biomart.com) Fax: 1-631-938-8127

45-1 Ramsey Road, Shirley, NY 11967, USA