

Active Recombinant Human FCGR3A protein(V176), His-tagged

Cat. No. FCGR3A-135H Lot. No. (See product label)

SPECIFICATION

Product Overview	Recombinant Human FCGR3A protein(P08637)(Gly17-Gln208)(Val176), fused with His tag, was expressed in HEK293.
Species	Human
Source	HEK293
ProteinLength	Gly17-Gln208
Form	Lyophilized from 0.22 µm filtered solution in PBS, pH7.4.
Bio-activity	Anti-Human CD20(Rituximab) captured on Protein A chip, can bind Recombinant Human CD16a(V176) / His Protein with a KD constant of 2.87E-08 M, determined in a SPR assay.
Molecular Mass	The protein has a calculated MW of 23kDa.The reducing (R) heterodimer protein migrates as 35-70 kDa due to glycosylation
Endotoxin	<1EU/mg
Purity	SDS-PAGE>90%SEC>95%
Storage	Store at -20°C.

 Tel: 1-631-559-9269 1-516-512-3133

 Email: info@creative-biomart.com  Fax: 1-631-938-8127

 45-1 Ramsey Road, Shirley, NY 11967, USA

Reconstitution sterile H560

GENE INFORMATION

Gene Name FCGR3A Fc fragment of IgG, low affinity IIIa, receptor (CD16a) [Homo sapiens]

Official Symbol FCGR3A

Synonyms

FCGR3A; Fc fragment of IgG, low affinity IIIa, receptor (CD16a); Fc fragment of IgG, low affinity IIIa, receptor for (CD16), FCG3, FCGR3; low affinity immunoglobulin gamma Fc region receptor III-A; CD16; CD16a; FcgammaRIIIA; CD16a antigen; fc-gamma RIII; Fc-gamma RIIIa; Fc-gamma RIII-alpha; igG Fc receptor III-2; Fc gamma receptor III-A; Fc-gamma receptor IIIb (CD16); neutrophil-specific antigen NA; Fc-gamma receptor III-2 (CD 16); immunoglobulin G Fc receptor III; Fc fragment of IgG, low affinity III, receptor for (CD16); FCG3; CD16A; FCGR3; IGFR3; FCR-10; FCRIII; FCGRIII; FCRIIIA;

Gene ID 2214

mRNA Refseq NM_000569

Protein Refseq NP_000560

MIM 146740

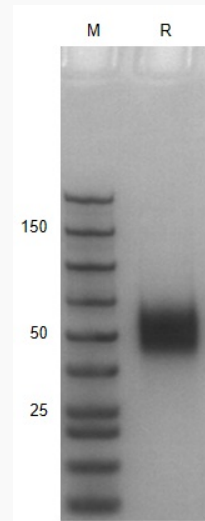
UniProt ID P08637

 Tel: 1-631-559-9269 1-516-512-3133

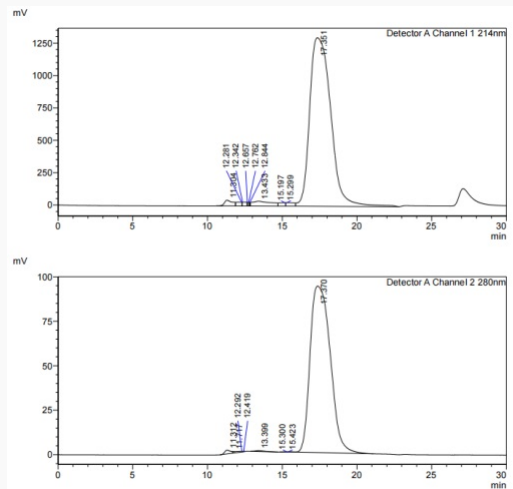
 Email: info@creative-biomart.com  Fax: 1-631-938-8127

 45-1 Ramsey Road, Shirley, NY 11967, USA

SDS-PAGE



SDS-HPLC

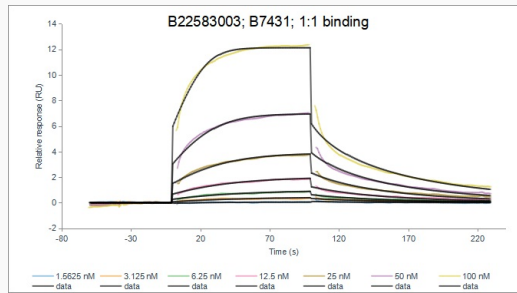


Tel: 1-631-559-9269 1-516-512-3133

Email: info@creative-biomart.com Fax: 1-631-938-8127

45-1 Ramsey Road, Shirley, NY 11967, USA

SPR



 Tel: 1-631-559-9269 1-516-512-3133

 Email: info@creative-biomart.com  Fax: 1-631-938-8127

 45-1 Ramsey Road, Shirley, NY 11967, USA