

Recombinant Human FCGR3A protein(R167) , His-Avi-tagged

Cat. No. FCGR3A-142H Lot. No. (See product label)

SPECIFICATION

Product Overview	Recombinant Human Fc gamma RIIA/CD32a (R167) Protein is expressed from mammalian with a His and Avi tag at the C-terminal. It contains Ala 36 - Ile 218.
Species	Human
Source	HEK293
ProteinLength	It contains Ala 36 - Ile 218 .
Description	The Fc gamma Rs have been divided into three classes based on close relationships in their extracellular domains; these groups are designated Fc gamma RI (also known as CD64), Fc gamma RII (CD32), and Fc gamma RIII (CD16). Each group may be encoded by multiple genes and exist in different isoforms depending on species and cell type. The CD64 proteins are high affinity receptors (~10e-8-10e-9 M) capable of binding monomeric IgG, whereas the CD16 and CD32 proteins bind IgG with lower affinities (~10e-6-10e-7 M) only recognizing IgG aggregates surrounding multivalent antigens.
Form	Supplied as 0.22um filtered solution in PBS (pH 7.4).
Molecular Mass	The Protein has a calculated MW of 23.2kDa .As a result of glycosylation, the protein migrates as 34-40kDa based on Bis-Tris PAGE.
Endotoxin	Less than 0.01EU per ug by the LAL method.

 Tel: 1-631-559-9269 1-516-512-3133

 Email: info@creative-biomart.com  Fax: 1-631-938-8127

 45-1 Ramsey Road, Shirley, NY 11967, USA

Purity	> 95% as determined by Bis-Tris PAGE; > 95% as determined by HPLC
Storage	The product should be stored at -70°C. Please do not repeated freeze-thaw cycles.
Reconstitution	It is recommended that sterile water be added to the vial to prepare a stock solution of 0.2 ug/ul. Centrifuge the vial at 4°C before opening to recover the entire contents.

GENE INFORMATION

Gene Name	FCGR3A Fc fragment of IgG, low affinity IIIa, receptor (CD16a) [Homo sapiens]
Official Symbol	FCGR3A
Synonyms	CD32 antigen; CD32a; CD32MGC23887; CDw32fc-gamma-RIIa; Fc fragment of IgG, low affinity IIa, receptor (CD32); Fc fragment of IgG, low affinity IIa, receptor for (CD32); Fc gamma RIIA; FCG2; Fc-gamma RII-a; Fc-gamma-RIIa; FcGR; FCGR2; FCGR2A; FCGR2A1; FcgRIIA; FCRIIA; fcRII-a; IGFR2MGC30032; IgG Fc receptor II-a; Immunoglobulin G Fc receptor II; low affinity immunoglobulin gamma Fc region receptor II-a
Gene ID	2214
mRNA Refseq	NM_000569
Protein Refseq	NP_000560
MIM	146740
UniProt ID	P08637

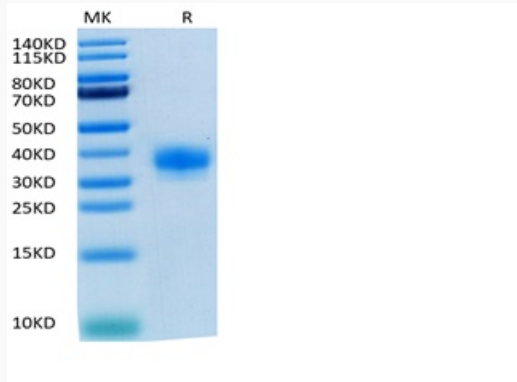
 Tel: 1-631-559-9269 1-516-512-3133

 Email: info@creative-biomart.com  Fax: 1-631-938-8127

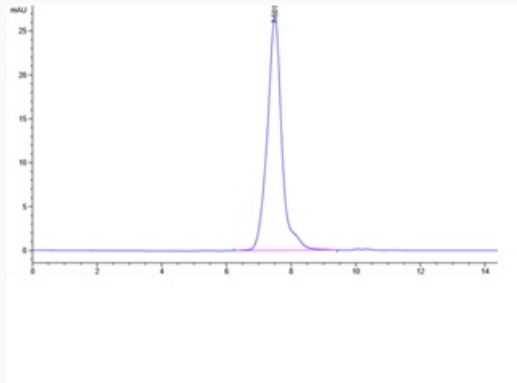
 45-1 Ramsey Road, Shirley, NY 11967, USA



Tris-Bis PAGE



HPLC data



Tel: 1-631-559-9269 1-516-512-3133

Email: info@creative-biomart.com Fax: 1-631-938-8127

45-1 Ramsey Road, Shirley, NY 11967, USA