

# Recombinant Human FCGR3A Protein (Thr20-Gln208), C-His-Fc tagged

Cat. No. FCGR3A-2457H Lot. No. (See product label)

## SPECIFICATION

<b>Product Overview</b>	Recombinant human FCGR3A (Thr20-Gln208) protein fused with the C-terminal His-Fc tag was expressed in Mammalian cells.
<b>Species</b>	Human
<b>Source</b>	Mammalian Cells
<b>ProteinLength</b>	Thr20-Gln208
<b>Molecular Mass</b>	45.79 kDa
<b>Purity</b>	>90 % as determined by SDS-PAGE.
<b>Notes</b>	For research use only.
<b>Storage</b>	Use a manual defrost freezer and avoid repeated freeze thaw cycles. Store at 2 to 8 centigrade for one week. Store at -20 to -80 centigrade for twelve months from the date of receipt.
<b>Storage Buffer</b>	Supplied as solution form in PBS or lyophilized from PBS.
<b>Reconstitution</b>	Reconstitute in sterile water for a stock solution.
<b>Shipping</b>	In general, proteins are provided as lyophilized powder/frozen liquid. They are

 Tel: 1-631-559-9269 1-516-512-3133

 Email: [info@creative-biomart.com](mailto:info@creative-biomart.com)  Fax: 1-631-938-8127

 45-1 Ramsey Road, Shirley, NY 11967, USA

shipped out with dry ice/blue ice unless customers require otherwise.

## GENE INFORMATION

**Gene Name** [FCGR3A Fc fragment of IgG, low affinity IIIa, receptor \(CD16a\) \[ Homo sapiens \(human\) \]](#)

**Official Symbol** [FCGR3A](#)

**Synonyms** [FCGR3A](#); Fc fragment of IgG, low affinity IIIa, receptor (CD16a); Fc fragment of IgG, low affinity IIIa, receptor for (CD16), FCG3, FCGR3; low affinity immunoglobulin gamma Fc region receptor III-A; CD16; CD16a; FcgammaRIIIA; CD16a antigen; fc-gamma RIII; Fc-gamma RIIIa; Fc-gamma RIII-alpha; igG Fc receptor III-2; Fc gamma receptor III-A; Fc-gamma receptor IIIb (CD16); neutrophil-specific antigen NA; Fc-gamma receptor III-2 (CD 16); immunoglobulin G Fc receptor III; Fc fragment of IgG, low affinity III, receptor for (CD16); FCG3; CD16A; FCGR3; IGFR3; FCR-10; FCRIII; FCGRIII; FCRIIIA;

**Gene ID** [2214](#)

**mRNA Refseq** [NM\\_000569](#)

**Protein Refseq** [NP\\_000560](#)

**MIM** [146740](#)

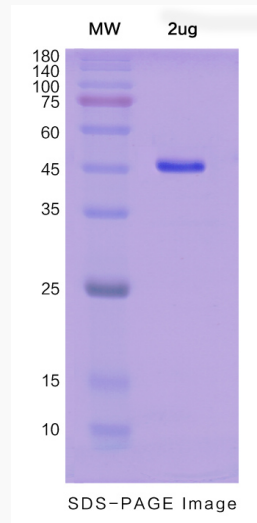
**UniProt ID** [P08637](#)

 Tel: 1-631-559-9269 1-516-512-3133

 Email: [info@creative-biomart.com](mailto:info@creative-biomart.com)  Fax: 1-631-938-8127

 45-1 Ramsey Road, Shirley, NY 11967, USA

**SDS-PAGE**



 Tel: 1-631-559-9269 1-516-512-3133

 Email: [info@creative-biomart.com](mailto:info@creative-biomart.com)  Fax: 1-631-938-8127

 45-1 Ramsey Road, Shirley, NY 11967, USA