

Active Recombinant Human FCGR3A protein(NA1), His-tagged

Cat. No. FCGR3A-4232H Lot. No. (See product label)

SPECIFICATION

Product Overview	Recombinant Human FCGR3A protein(AAA35881.1)(Gly17-Ser200), fused with His tag, was expressed in HEK293.
Species	Human
Source	HEK293
ProteinLength	Gly17-Ser200
Form	Lyophilized from 0.22 µm filtered solution in PBS, pH7.4.
Bio-activity	Anti-Human CD20(Rituximab) captured on Protein A chip, can bind Recombinant Human CD16b(NA1) / His Protein with a KD constant of 1.47E-05 M, determined in a SPR assay.
Molecular Mass	The protein has a calculated MW of 22kDa.The reducing (R) heterodimer protein migrates as 35-50 kDa due to glycosylation
Endotoxin	<1EU/mg
Purity	SDS-PAGE>90%SEC>95%
Storage	Store at -20°C.
Reconstitution	sterile H57O

 Tel: 1-631-559-9269 1-516-512-3133

 Email: info@creative-biomart.com  Fax: 1-631-938-8127

 45-1 Ramsey Road, Shirley, NY 11967, USA

GENE INFORMATION

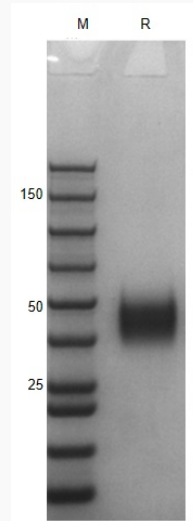
Gene Name	FCGR3A Fc fragment of IgG, low affinity IIIa, receptor (CD16a) [Homo sapiens]
Official Symbol	FCGR3A
Synonyms	FCGR3A; Fc fragment of IgG, low affinity IIIa, receptor (CD16a); Fc fragment of IgG, low affinity IIIa, receptor for (CD16), FCG3, FCGR3; low affinity immunoglobulin gamma Fc region receptor III-A; CD16; CD16a; FcgammaRIIIA; CD16a antigen; fc-gamma RIII; Fc-gamma RIIIa; Fc-gamma RIII-alpha; igG Fc receptor III-2; Fc gamma receptor III-A; Fc-gamma receptor IIIb (CD16); neutrophil-specific antigen NA; Fc-gamma receptor III-2 (CD 16); immunoglobulin G Fc receptor III; Fc fragment of IgG, low affinity III, receptor for (CD16); FCG3; CD16A; FCGR3; IGFR3; FCR-10; FCRIII; FCGRIII; FCRIIIA;
Gene ID	2214
mRNA Refseq	NM_000569
Protein Refseq	NP_000560
MIM	146740
UniProt ID	P08637

 Tel: 1-631-559-9269 1-516-512-3133

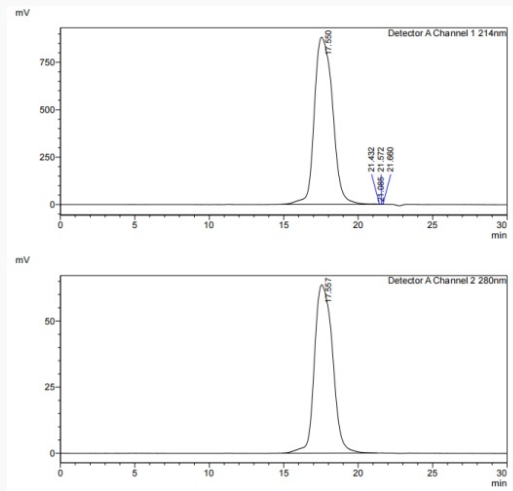
 Email: info@creative-biomart.com  Fax: 1-631-938-8127

 45-1 Ramsey Road, Shirley, NY 11967, USA

SDS-PAGE



SDS-HPLC

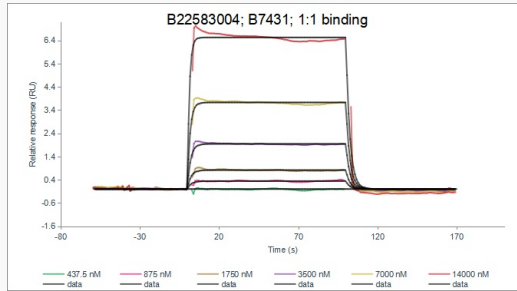


 Tel: 1-631-559-9269 1-516-512-3133

 Email: info@creative-biomart.com  Fax: 1-631-938-8127


 45-1 Ramsey Road, Shirley, NY 11967, USA

SPR



 Tel: 1-631-559-9269 1-516-512-3133

 Email: info@creative-biomart.com  Fax: 1-631-938-8127

 45-1 Ramsey Road, Shirley, NY 11967, USA