

# Active Recombinant Human FCGR3A protein, His-tagged, 176 Val

**Cat. No.** FCGR3A-7288H    **Lot. No.** (See product label)

## SPECIFICATION

<b>Product Overview</b>	Recombinant Human FCGR3A protein is produced by CHO Cells expression system. This protein is fused with a His tag at the C-terminal. A DNA sequence encoding the extracellular domain (Met 1-Gln 208) of human CD16a (AAH17865.1) was expressed, with a C-terminal polyhistidine tag. It is identical to FCGR3A158F/V in the reference.
<b>Species</b>	Human
<b>Source</b>	CHO
<b>ProteinLength</b>	Met 1-Gln 208
<b>Form</b>	Lyophilized from sterile PBS, pH 7.2. Normally 5 % - 8 % trehalose, mannitol and 0.01% Tween80 are added as protectants before lyophilization.
<b>Bio-activity</b>	Measured by its binding ability in a functional ELISA. Immobilized human CD16a-His at 10 µg/ml (100 µl/well) can bind recombinant human IgG1 (Fc). The EC50 of human IgG1 (Fc) is 0.40-0.92 µg/ml.
<b>Molecular Mass</b>	40-45 Kda
<b>Endotoxin</b>	< 1.0 EU per µg of the protein as determined by the LAL method
<b>Purity</b>	> 95 % as determined by SDS-PAGE

 Tel: 1-631-559-9269    1-516-512-3133

 Email: [info@creative-biomart.com](mailto:info@creative-biomart.com)     Fax: 1-631-938-8127

 45-1 Ramsey Road, Shirley, NY 11967, USA

<b>Stability</b>	Samples are stable for up to twelve months from date of receipt at -70 centigrade.
<b>Storage</b>	Store it under sterile conditions at -20 to -80 centigrade. It is recommended that the protein be aliquoted for optimal storage. Avoid repeated freeze-thaw cycles.
<b>Reconstitution</b>	Reconstitute at 100µg/ml in sterile PBS.
<b>Shipping</b>	In general, recombinant proteins are provided as lyophilized powder which are shipped at ambient temperature. Bulk packages of recombinant proteins are provided as frozen liquid. They are shipped out with blue ice unless customers require otherwise

## GENE INFORMATION

<b>Gene Name</b>	FCGR3A Fc fragment of IgG, low affinity IIIa, receptor (CD16a) [ Homo sapiens ]
<b>Official Symbol</b>	FCGR3A
<b>Synonyms</b>	CD16; CD16A; FcgammaRIIIa; FCG3; FCGR3; FCGRIII; FCR-10; FCRIII; FCRIIIA; IGFR3; IMD20
<b>Gene ID</b>	2214
<b>mRNA Refseq</b>	NM_000569
<b>Protein Refseq</b>	NP_000560
<b>MIM</b>	146740
<b>UniProt ID</b>	P08637

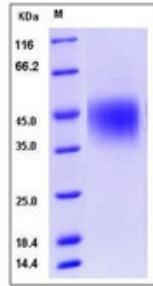
 Tel: 1-631-559-9269 1-516-512-3133

 Email: [info@creative-biomart.com](mailto:info@creative-biomart.com)  Fax: 1-631-938-8127

 45-1 Ramsey Road, Shirley, NY 11967, USA



FCGR3A-7288H, 1



Tel: 1-631-559-9269 1-516-512-3133

Email: [info@creative-biomart.com](mailto:info@creative-biomart.com) Fax: 1-631-938-8127

45-1 Ramsey Road, Shirley, NY 11967, USA