

# Recombinant Human FCGR3B Protein (Thr20-Gln208), C-His-Fc tagged

Cat. No. FCGR3B-2459H Lot. No. (See product label)

## SPECIFICATION

<b>Product Overview</b>	Recombinant human FCGR3B (Thr20-Gln208) protein fused with the C-terminal His-Fc tag was expressed in Mammalian cells.
<b>Species</b>	Human
<b>Source</b>	Mammalian Cells
<b>ProteinLength</b>	Thr20-Gln208
<b>Molecular Mass</b>	45.79 kDa
<b>Purity</b>	>90 % as determined by SDS-PAGE.
<b>Notes</b>	For research use only.
<b>Storage</b>	Use a manual defrost freezer and avoid repeated freeze thaw cycles. Store at 2 to 8 centigrade for one week. Store at -20 to -80 centigrade for twelve months from the date of receipt.
<b>Storage Buffer</b>	Supplied as solution form in PBS or lyophilized from PBS.
<b>Reconstitution</b>	Reconstitute in sterile water for a stock solution.
<b>Shipping</b>	In general, proteins are provided as lyophilized powder/frozen liquid. They are

 Tel: 1-631-559-9269 1-516-512-3133

 Email: [info@creative-biomart.com](mailto:info@creative-biomart.com)  Fax: 1-631-938-8127

 45-1 Ramsey Road, Shirley, NY 11967, USA

shipped out with dry ice/blue ice unless customers require otherwise.

## GENE INFORMATION

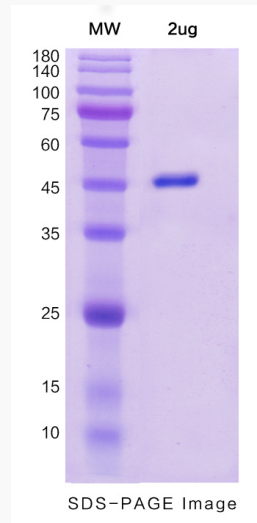
<b>Gene Name</b>	FCGR3B Fc fragment of IgG, low affinity IIIb, receptor (CD16b) [ Homo sapiens (human) ]
<b>Official Symbol</b>	FCGR3B
<b>Synonyms</b>	FCGR3B; Fc fragment of IgG, low affinity IIIb, receptor (CD16b); Fc fragment of IgG, low affinity IIIb, receptor for (CD16), FCG3, FCGR3; low affinity immunoglobulin gamma Fc region receptor III-B; CD16; CD16b; fc-gamma RIII; fc-gamma RIIIb; fc-gamma RIII-beta; igG Fc receptor III-1; Fc-gamma receptor IIIb (CD 16); Fc fragment of IgG, low affinity IIIb, receptor for (CD16); FCG3; FCGR3; FCR-10; FCRIII; FCRIIIb;
<b>Gene ID</b>	2215
<b>mRNA Refseq</b>	NM_000570
<b>Protein Refseq</b>	NP_000561
<b>MIM</b>	610665
<b>UniProt ID</b>	O75015

 Tel: 1-631-559-9269 1-516-512-3133

 Email: [info@creative-biomart.com](mailto:info@creative-biomart.com)  Fax: 1-631-938-8127

 45-1 Ramsey Road, Shirley, NY 11967, USA

**SDS-PAGE**



 Tel: 1-631-559-9269 1-516-512-3133

 Email: [info@creative-biomart.com](mailto:info@creative-biomart.com)  Fax: 1-631-938-8127

 45-1 Ramsey Road, Shirley, NY 11967, USA