

Recombinant Human FCGR3B protein, His-Avi-tagged

Cat. No. FCGR3B-430H Lot. No. (See product label)

SPECIFICATION

Product Overview	Recombinant Human FCGR3B protein(O75015-1)(Gly17-Ser200(NA2)), fused with C-terminal His and Avi tag, was expressed in HEK293.
Species	Human
Source	HEK293
ProteinLength	Gly17-Ser200(NA2)
Tag	C-His-Avi
Form	Lyophilized from 0.22µm filtered solution in PBS (pH 7.4). Normally 5% trehalose is added as protectant before lyophilization.
Bio-activity	Human Fc gamma RIIIB (NA2), His Tag captured on CM5 Chip via Anti-his antibody can bind Rituximab with an affinity constant of 2.33 µM as determined in SPR assay (Biacore T200).
Molecular Mass	The protein has a predicted MW of 23.7 kDa. Due to glycosylation, the protein migrates to 47-53 kDa based on Tris-Bis PAGE result.
Endotoxin	Less than 1EU per µg by the LAL method.
Purity	> 95% as determined by Tris-Bis PAGE; > 95% as determined by HPLC

 Tel: 1-631-559-9269 1-516-512-3133

 Email: info@creative-biomart.com  Fax: 1-631-938-8127

 45-1 Ramsey Road, Shirley, NY 11967, USA

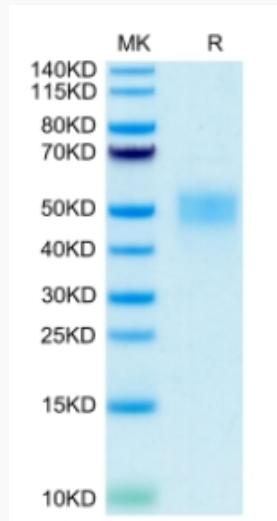
Storage	Reconstituted protein stable at -80°C for 12 months, 4°C for 1 week. Use a manual defrost freezer and avoid repeated freeze-thaw cycles.
Reconstitution	Centrifuge tubes before opening. Reconstituting to a concentration more than 100 µg/ml is recommended. Dissolve the lyophilized protein in distilled water.
GENE INFORMATION	
Gene Name	FCGR3B Fc fragment of IgG, low affinity IIIb, receptor (CD16b) [Homo sapiens]
Official Symbol	FCGR3B
Synonyms	FCGR3B; Fc fragment of IgG, low affinity IIIb, receptor (CD16b); Fc fragment of IgG, low affinity IIIb, receptor for (CD16) , FCG3, FCGR3; low affinity immunoglobulin gamma Fc region receptor III-B; CD16; CD16b; fc-gamma RIII; fc-gamma RIIIb; fc-gamma RIII-beta; igG Fc receptor III-1; Fc-gamma receptor IIIb (CD 16); Fc fragment of IgG, low affinity IIIb, receptor for (CD16); FCG3; FCGR3; FCR-10; FCRIII; FCRIIIb;
Gene ID	2215
mRNA Refseq	NM_000570
Protein Refseq	NP_000561
MIM	610665
UniProt ID	O75015

 Tel: 1-631-559-9269 1-516-512-3133

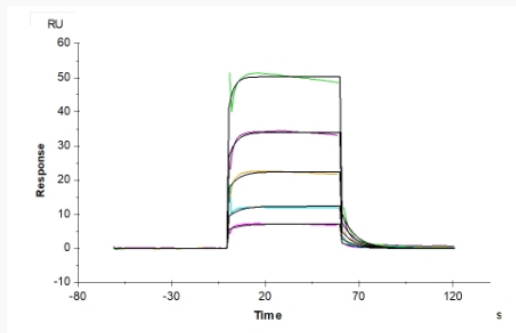
 Email: info@creative-biomart.com  Fax: 1-631-938-8127

 45-1 Ramsey Road, Shirley, NY 11967, USA

Tris-Bis PAGE



SPR Data



 Tel: 1-631-559-9269 1-516-512-3133

 Email: info@creative-biomart.com  Fax: 1-631-938-8127

 45-1 Ramsey Road, Shirley, NY 11967, USA