

Recombinant Human FCGR3B protein, His-tagged

Cat. No. FCGR3B-4675H Lot. No. (See product label)

SPECIFICATION

| | |
|-------------------------|---|
| Product Overview | Recombinant Human FCGR3B protein(O75015)(17-200 aa), fused with N-terminal His tag, was expressed in Yeast. |
| Species | Human |
| Source | Yeast |
| ProteinLength | 17-200 aa |
| Form | For liquid formulations, the standard storage buffer consists of a Tris or PBS based solution supplemented with 5-50% glycerol. When provided as lyophilized powder, the product undergoes freeze-drying from a Tris- or PBS-based formulation containing 6% trehalose, adjusted to pH 8.0 prior to the lyophilization process. |
| Molecular Mass | 22.8 kDa |
| AASequence | GMRTEDLPKAVVFLEPQWYSVLEKDSVTLKQCQAYSPEDNSTQWFHNESLISSQAS SYFIDAATVNDSGEYRCQTNLSTLSDPVQLEVHIGWLLLQAPRWVFKKEEDPIHLRCH SWKNTALHKVITYLQNGKDRKYFHHNSDFHIPKATLKDSGSYFCRGLVGSKNVSSET VNITITQGLAVSTIS |
| Purity | Greater than 95% as determined by SDS-PAGE. |
| Storage | Store at -20°C/-80°C upon receipt, aliquoting is necessary for mutiple use. Avoid repeated freeze-thaw cycles. |

 Tel: 1-631-559-9269 1-516-512-3133

 Email: info@creative-biomart.com  Fax: 1-631-938-8127

 45-1 Ramsey Road, Shirley, NY 11967, USA

Reconstitution Please reconstitute protein in deionized sterile water to a concentration of 0.1-1.0 mg/mL. Aliquot for long-term storage at -80°C.

GENE INFORMATION

Gene Name FCGR3B Fc fragment of IgG, low affinity IIIb, receptor (CD16b) [Homo sapiens]

Official Symbol FCGR3B

Synonyms FCGR3B; Fc fragment of IgG, low affinity IIIb, receptor (CD16b); Fc fragment of IgG, low affinity IIIb, receptor for (CD16) , FCG3, FCGR3; low affinity immunoglobulin gamma Fc region receptor III-B; CD16; CD16b; fc-gamma RIII; fc-gamma RIIIb; fc-gamma RIII-beta; igG Fc receptor III-1; Fc-gamma receptor IIIb (CD 16); Fc fragment of IgG, low affinity IIIb, receptor for (CD16); FCG3; FCGR3; FCR-10; FCRIII; FCRIIIb;

Gene ID 2215

mRNA Refseq NM_000570

Protein Refseq NP_000561

MIM 610665

UniProt ID O75015

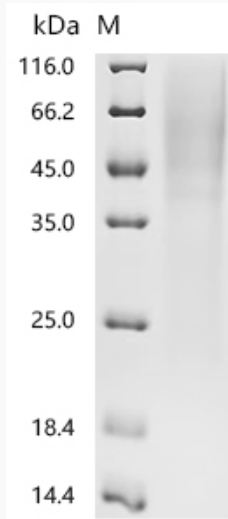
 Tel: 1-631-559-9269 1-516-512-3133

 Email: info@creative-biomart.com  Fax: 1-631-938-8127

 45-1 Ramsey Road, Shirley, NY 11967, USA



SDS-PAGE



Tel: 1-631-559-9269 1-516-512-3133

Email: info@creative-biomart.com Fax: 1-631-938-8127

45-1 Ramsey Road, Shirley, NY 11967, USA