

Active Recombinant Human FCGR3B protein, Biotinylated

Cat. No. FCGR3B-484H Lot. No. (See product label)

SPECIFICATION

Product Overview	Biotinylated Active Recombinant Human FCGR3B protein(O75015-1) (Met 18-Gly 193) was expressed and purified in E. coli.
Species	Human
Source	E. coli
ProteinLength	18-193 aa
Conjugation/Label	Biotin
Description	Labeling ratio of biotin to protein: 5.51.
Form	Lyophilized from sterile PBS, pH 7.4.
Bio-activity	Measured by its ability to bind human IgG1 in a functional ELISA.
Molecular Mass	The recombinant human CD16b comprises 176 amino acids and has a predicted molecular mass of 20 kDa.
Purity	> 90 % as determined by SDS-PAGE
Storage	Store it under sterile conditions at -20°C to -80°C upon receiving. Recommend to aliquot the protein into smaller quantities for optimal storage. Avoid repeated freeze-thaw cycles.

 Tel: 1-631-559-9269 1-516-512-3133

 Email: info@creative-biomart.com  Fax: 1-631-938-8127

 45-1 Ramsey Road, Shirley, NY 11967, USA

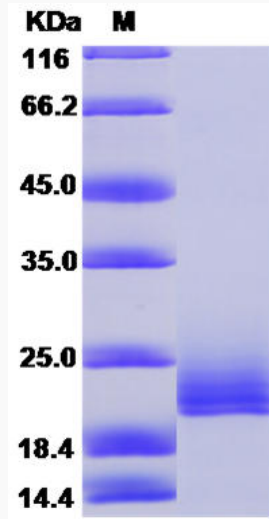
Reconstitution	It is recommended that sterile water be added to the vial to prepare a stock solution of 0.2 ug/ul. Centrifuge the vial at 4°C before opening to recover the entire contents.
protein Refseq-Weblink	http://www.ncbi.nlm.nih.gov/protein/NP_000561.3
Unit ID	O75015
Unit ID-Weblink	http://www.uniprot.org/uniprot/O75015
GENE INFORMATION	
Gene Name	FCGR3B Fc fragment of IgG, low affinity IIIb, receptor (CD16b) [Homo sapiens]
Official Symbol	FCGR3B
Synonyms	FCGR3B; Fc fragment of IgG, low affinity IIIb, receptor (CD16b); Fc fragment of IgG, low affinity IIIb, receptor for (CD16) , FCG3, FCGR3; low affinity immunoglobulin gamma Fc region receptor III-B; CD16; CD16b; fc-gamma RIII; fc-gamma RIIIb; fc-gamma RIII-beta; igG Fc receptor III-1; Fc-gamma receptor IIIb (CD 16); Fc fragment of IgG, low affinity IIIb, receptor for (CD16); FCG3; FCGR3; FCR-10; FCRIII; FCRIIIb;
Gene ID	2215
mRNA Refseq	NM_000570
protein Refseq	NP_000561
MIM	610665

 Tel: 1-631-559-9269 1-516-512-3133

 Email: info@creative-biomart.com  Fax: 1-631-938-8127

 45-1 Ramsey Road, Shirley, NY 11967, USA

SDS-PAGE



 Tel: 1-631-559-9269 1-516-512-3133

 Email: info@creative-biomart.com  Fax: 1-631-938-8127

 45-1 Ramsey Road, Shirley, NY 11967, USA