

Recombinant Human FCGRT protein, His & T7-tagged

Cat. No. FCGRT-1629H Lot. No. (See product label)

SPECIFICATION

Product Overview	Recombinant Human FCGRT aa. (Ala24~Ala365 (Accession # P55899)) fused with N-terminal His & T7 tag was produced in E. coli cells.
Species	Human
Source	E.coli
ProteinLength	Ala24~Ala365
Description	This gene encodes a receptor that binds the Fc region of monomeric immunoglobulin G. The encoded protein transfers immunoglobulin G antibodies from mother to fetus across the placenta. This protein also binds immunoglobulin G to protect the antibody from degradation. Alternative splicing results in multiple transcript variants.
Form	Freeze-dried powder
Molecular Mass	Predicted Molecular Mass: 41.0kDa
Endotoxin	<1.0EU per 1ug (determined by the LAL method)
Purity	>90%
Applications	SDS-PAGE; WB; ELISA; IP.
Stability	The thermal stability is described by the loss rate. The loss rate was determined by

 Tel: 1-631-559-9269 1-516-512-3133

 Email: info@creative-biomart.com  Fax: 1-631-938-8127

 45-1 Ramsey Road, Shirley, NY 11967, USA

accelerated thermal degradation test, that is, incubate the protein at 37°C for 48h, and no obvious degradation and precipitation were observed. The loss rate is less than 5% within the expiration date under appropriate storage condition.

Storage

Avoid repeated freeze/thaw cycles. Store at 2-8°C for one month. Aliquot and store at -80°C for 12 months.

Storage buffer

Supplied as lyophilized form in PBS, pH7.4, containing 5% trehalose, 0.01% sarcosyl.

Reconstitution

Reconstitute in sterile PBS, pH7.2-pH7.4.

Isoelectric Point

5.9

GENE INFORMATION

Gene Name

[FCGRT Fc fragment of IgG receptor and transporter \[Homo sapiens \(human\) \]](#)

Official Symbol

[FCGRT](#)

Synonyms

FCGRT; Fc fragment of IgG receptor and transporter; FCRN; alpha-chain; IgG receptor FcRn large subunit p51; Fc fragment of IgG, receptor, transporter, alpha; FcRn alpha chain; IgG Fc fragment receptor transporter alpha chain; heavy chain of the major histocompatibility complex class I-like Fc receptor; immunoglobulin receptor, intestinal, heavy chain; major histocompatibility complex class I-like Fc receptor; neonatal Fc receptor; neonatal Fc-receptor for Ig; transmembrane alpha chain of the neonatal receptor

Gene ID

[2217](#)

mRNA Refseq

[NM_001136019.2](#)

 Tel: 1-631-559-9269 1-516-512-3133

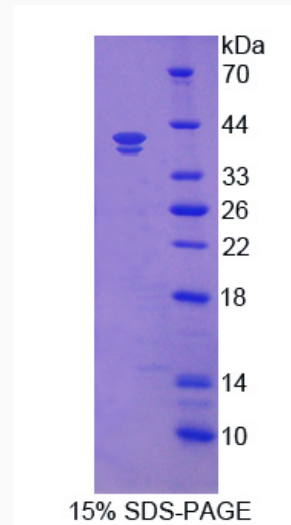
 Email: info@creative-biomart.com  Fax: 1-631-938-8127

 45-1 Ramsey Road, Shirley, NY 11967, USA

Protein Refseq NP_001129491.1

UniProt ID P55899

SDS-PAGE



 Tel: 1-631-559-9269 1-516-512-3133

 Email: info@creative-biomart.com  Fax: 1-631-938-8127

 45-1 Ramsey Road, Shirley, NY 11967, USA