

Recombinant Human FCGRT Protein, GST-tagged

Cat. No. FCGRT-3998H Lot. No. (See product label)

SPECIFICATION

Product Overview	Human FCGRT partial ORF (AAH08734, 51 a.a. - 160 a.a.) recombinant protein with GST-tag at N-terminal.
Species	Human
Source	Wheat Germ
Description	This gene encodes a receptor that binds the Fc region of monomeric immunoglobulin G. The encoded protein transfers immunoglobulin G antibodies from mother to fetus across the placenta. This protein also binds immunoglobulin G to protect the antibody from degradation. Alternative splicing results in multiple transcript variants. [provided by RefSeq, Apr 2009]
Molecular Mass	37.84 kDa
AA Sequence	GWLGPQQYLSYNLSLRGEAEPGAWVWENQVSWYWEKETDLRIKEKLFLEAFKAL GGKGPYTLQLLGCELGPDNTSVPTAKFALNGEEFMNFDLKQGTWGGDWPEALAI
Applications	Enzyme-linked Immunoabsorbent Assay Western Blot (Recombinant protein) Antibody Production Protein Array
Notes	Best use within three months from the date of receipt of this protein.

 Tel: 1-631-559-9269 1-516-512-3133

 Email: info@creative-biomart.com  Fax: 1-631-938-8127

 45-1 Ramsey Road, Shirley, NY 11967, USA

Storage Store at -80 centigrade. Aliquot to avoid repeated freezing and thawing.

Storage Buffer 50 mM Tris-HCl, 10 mM reduced Glutathione, pH=8.0 in the elution buffer.

GENE INFORMATION

Gene Name FCGRT Fc fragment of IgG, receptor, transporter, alpha [Homo sapiens]

Official Symbol FCGRT

Synonyms

FCGRT; Fc fragment of IgG, receptor, transporter, alpha; IgG receptor FcRn large subunit p51; alpha chain; FCRN; FcRn alpha chain; neonatal Fc receptor; neonatal Fc-receptor for Ig; IgG Fc fragment receptor transporter alpha chain; immunoglobulin receptor, intestinal, heavy chain; major histocompatibility complex class I-like Fc receptor; alpha-chain;

Gene ID 2217

mRNA Refseq NM_001136019

Protein Refseq NP_001129491

MIM 601437

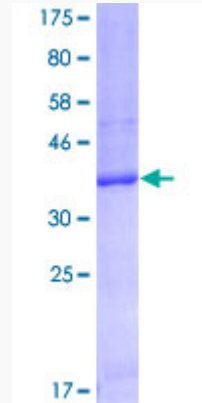
UniProt ID P55899

 Tel: 1-631-559-9269 1-516-512-3133

 Email: info@creative-biomart.com  Fax: 1-631-938-8127

 45-1 Ramsey Road, Shirley, NY 11967, USA

**Quality Control
Testing**



12.5% SDS-PAGE Stained with Coomassie Blue.

 Tel: 1-631-559-9269 1-516-512-3133

 Email: info@creative-biomart.com  Fax: 1-631-938-8127

 45-1 Ramsey Road, Shirley, NY 11967, USA