

Recombinant Human FCRL1 Protein (Ala17-Asn303), C-His tagged

Cat. No. FCRL1-2803H Lot. No. (See product label)

SPECIFICATION

| | |
|-------------------------|---|
| Product Overview | Recombinant human FCRL1 (Ala17-Asn303) protein fused with the C-terminal His tag was expressed in Mammalian cells. |
| Species | Human |
| Source | Mammalian Cells |
| ProteinLength | Ala17-Asn303 |
| Molecular Mass | 31.57 kDa |
| Purity | >90 % as determined by SDS-PAGE. |
| Notes | For research use only. |
| Storage | Use a manual defrost freezer and avoid repeated freeze thaw cycles. Store at 2 to 8 centigrade for one week. Store at -20 to -80 centigrade for twelve months from the date of receipt. |
| Storage Buffer | Supplied as solution form in PBS or lyophilized from PBS. |
| Reconstitution | Reconstitute in sterile water for a stock solution. |
| Shipping | In general, proteins are provided as lyophilized powder/frozen liquid. They are |

 Tel: 1-631-559-9269 1-516-512-3133

 Email: info@creative-biomart.com  Fax: 1-631-938-8127

 45-1 Ramsey Road, Shirley, NY 11967, USA

shipped out with dry ice/blue ice unless customers require otherwise.

GENE INFORMATION

Gene Name FCRL1 Fc receptor-like 1 [Homo sapiens (human)]

Official Symbol FCRL1

Synonyms FCRL1; Fc receptor-like 1; Fc receptor-like protein 1; CD307a; FCRH1; IFGP1; IRTA5; hIFGP1; fcR-like protein 1; IFGP family protein 1; fc receptor homolog 1; immunoglobulin superfamily Fc receptor, gp42; immune receptor translocation-associated protein 5; DKFZp667O1421;

Gene ID 115350

mRNA Refseq NM_001159397

Protein Refseq NP_001152869

MIM 606508

UniProt ID Q96LA6

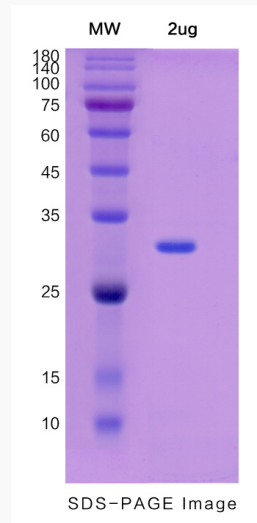
 Tel: 1-631-559-9269 1-516-512-3133

 Email: info@creative-biomart.com  Fax: 1-631-938-8127

 45-1 Ramsey Road, Shirley, NY 11967, USA



SDS-PAGE



Tel: 1-631-559-9269 1-516-512-3133

Email: info@creative-biomart.com Fax: 1-631-938-8127

45-1 Ramsey Road, Shirley, NY 11967, USA