

Recombinant Human FCRL1 Protein (Met1-Ser307), C-His tagged

Cat. No. FCRL1-3990H Lot. No. (See product label)

SPECIFICATION

Product Overview	Recombinant human FCRL1 (Met1-Ser307) fused with the C-terminal His tag was expressed in Mammalian cells.
Species	Human
Source	Mammalian Cells
ProteinLength	Met1-Ser307
Form	Lyophilized powder/frozen liquid
Molecular Mass	33.33 kDa
Endotoxin	< 1.0 EU/μg of the protein as determined by the LAL method.
Purity	>90% as determined by SDS-PAGE.
Notes	For research use only.
Storage	Use a manual defrost freezer and avoid repeated freeze thaw cycles. Store at 2 to 8 centigrade for one week. Store at -20 to -80 centigrade for twelve months from the date of receipt.
Storage Buffer	Supplied as solution form in PBS or lyophilized from PBS.

 Tel: 1-631-559-9269 1-516-512-3133

 Email: info@creative-biomart.com  Fax: 1-631-938-8127

 45-1 Ramsey Road, Shirley, NY 11967, USA

Reconstitution Reconstitute in sterile water for a stock solution.

Shipping They are shipped out with dry ice/blue ice unless customers require otherwise.

GENE INFORMATION

Gene Name [FCRL1 Fc receptor-like 1 \[Homo sapiens \(human\) \]](#)

Official Symbol [FCRL1](#)

Synonyms FCRL1; Fc receptor-like 1; Fc receptor-like protein 1; CD307a; FCRH1; IFGP1; IRTA5; hIFGP1; fcR-like protein 1; IFGP family protein 1; fc receptor homolog 1; immunoglobulin superfamily Fc receptor, gp42; immune receptor translocation-associated protein 5; DKFZp667O1421;

Gene ID [115350](#)

mRNA Refseq [NM_001159397](#)

Protein Refseq [NP_001152869](#)

MIM [606508](#)

UniProt ID [Q96LA6](#)

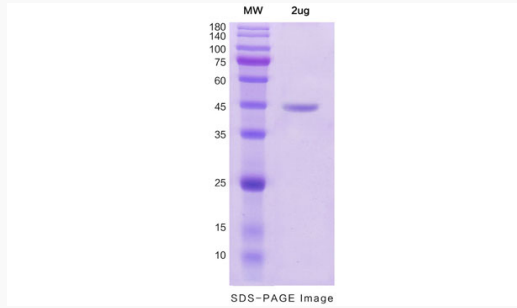
 Tel: 1-631-559-9269 1-516-512-3133

 Email: info@creative-biomart.com  Fax: 1-631-938-8127

 45-1 Ramsey Road, Shirley, NY 11967, USA



SDS-PAGE



Tel: 1-631-559-9269 1-516-512-3133

Email: info@creative-biomart.com Fax: 1-631-938-8127

45-1 Ramsey Road, Shirley, NY 11967, USA