

Recombinant Human FCRL1 Protein, GST-tagged

Cat. No. FCRL1-4006H Lot. No. (See product label)

SPECIFICATION

Product Overview	Human FCRL1 full-length ORF (NP_443170.1, 1 a.a. - 429 a.a.) recombinant protein with GST-tag at N-terminal.
Species	Human
Source	Wheat Germ
Description	<p>This gene encodes a member of the immunoglobulin receptor superfamily and is one of several Fc receptor-like glycoproteins clustered on the long arm of chromosome 1. The encoded protein contains three extracellular C2-like immunoglobulin domains, a transmembrane domain and a cytoplasmic domain with two immunoreceptor-tyrosine activation motifs. This protein may play a role in the regulation of cancer cell growth. Alternative splicing results in multiple transcript variants. [provided by RefSeq, Apr 2009]</p>
Molecular Mass	73.3 kDa
AA Sequence	<pre>MLPRLLLLICAPLCEPAELFLIASPSHPTGSPVTLTCKMPFLQSSDAQFQFCFFRD RALGPGWSSSPKLQIAAMWKEDTGSYWCEAQTMASKVLRSSQINVHRVPVADV SLETQPPGGQVMEGDRLVLCISVAMGTGDITFLWYKGAVGLNLQSKTQRSLTAEYEI PSVRESDAEQYYCVAENGYGSPSPGLVSITVRIPVSRPILMLRAPRAQAAVEDVLEL HCEALRGSPPILYWPHYHEDITLGSRSAPSGGGASFNLSTEEHSGNYSCEANGLG AQRSEAVTLNFTVPTGARSNHLTSGVIEGLLSTLGPATVALLFCYGLKRKIGRRSARD PLRSLPSPLPQEFTYLNSPTPGQLQPIYENVNVVSGDEVYSLAYYNQPEQESVAAET</pre>

 Tel: 1-631-559-9269 1-516-512-3133

 Email: info@creative-biomart.com  Fax: 1-631-938-8127

 45-1 Ramsey Road, Shirley, NY 11967, USA



LGTHMEDKVSLDIYSRLRKANITDVDYEDAM

Applications

Enzyme-linked Immunoabsorbent Assay
Western Blot (Recombinant protein)
Antibody Production
Protein Array

Notes

Best use within three months from the date of receipt of this protein.

Storage

Store at -80 centigrade. Aliquot to avoid repeated freezing and thawing.

Storage Buffer

50 mM Tris-HCl, 10 mM reduced Glutathione, pH=8.0 in the elution buffer.

GENE INFORMATION

Gene Name

FCRL1 Fc receptor-like 1 [Homo sapiens]

Official Symbol

FCRL1

Synonyms

FCRL1; Fc receptor-like 1; Fc receptor-like protein 1; CD307a; FCRH1; IFGP1; IRTA5; hIFGP1; fcR-like protein 1; IFGP family protein 1; fc receptor homolog 1; immunoglobulin superfamily Fc receptor, gp42; immune receptor translocation-associated protein 5; DKFZp667O1421;

Gene ID

115350

mRNA Refseq

NM_001159397

Protein Refseq

NP_001152869

MIM

606508

Tel: 1-631-559-9269 1-516-512-3133

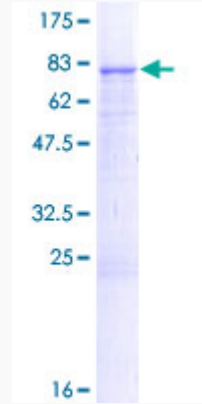
Email: info@creative-biomart.com Fax: 1-631-938-8127

45-1 Ramsey Road, Shirley, NY 11967, USA

UniProt ID

Q96LA6

Quality Control
Testing



12.5% SDS-PAGE Stained with Coomassie Blue.

 Tel: 1-631-559-9269 1-516-512-3133

 Email: info@creative-biomart.com  Fax: 1-631-938-8127

 45-1 Ramsey Road, Shirley, NY 11967, USA