

Recombinant Human FCRL5 protein, His-tagged

Cat. No. FCRL5-1378H Lot. No. (See product label)

SPECIFICATION

Product Overview	Recombinant Human FCRL5 protein(AAK93971)(Gln16-Gly851), fused with C-terminal His tag, was expressed in HEK293.
Species	Human
Source	C-His
ProteinLength	Gln16-Gly851
Tag	C-His
Form	Lyophilized from 0.22µm filtered solution in PBS (pH 7.4). Normally 8% trehalose is added as protectant before lyophilization.
Bio-activity	Immobilized Human FcRH5, His Tag at 0.5µg/ml (100µl/well) on the plate. Dose response curve for Anti-FcRH5 Antibody, hFc Tag with the EC50 of 16.8ng/ml determined by ELISA.
Molecular Mass	The protein has a predicted MW of 92.38 kDa. Due to glycosylation, the protein migrates to 120-140 kDa based on Tris-Bis PAGE result.
Endotoxin	Less than 1EU per µg by the LAL method.
Purity	> 95% as determined by Tris-Bis PAGE; > 95% as determined by HPLC.

 Tel: 1-631-559-9269 1-516-512-3133

 Email: info@creative-biomart.com  Fax: 1-631-938-8127

 45-1 Ramsey Road, Shirley, NY 11967, USA

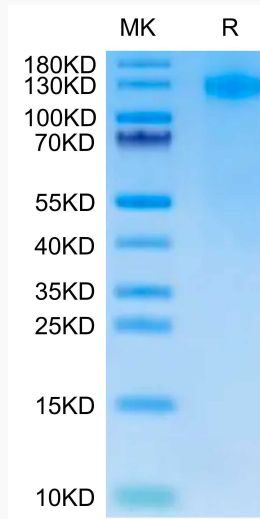
Storage	Reconstituted protein stable at -80°C for 12 months, 4°C for 1 week. Use a manual defrost freezer and avoid repeated freeze-thaw cycles.
Reconstitution	Centrifuge tubes before opening. Reconstituting to a concentration more than 100 µg/ml is recommended. Dissolve the lyophilized protein in distilled water.
GENE INFORMATION	
Gene Name	FCRL5 Fc receptor-like 5 [Homo sapiens]
Official Symbol	FCRL5
Synonyms	FCRL5; Fc receptor-like 5; Fc receptor-like protein 5; BXMAS1; CD307e; FCRH5; IRTA2; fcR-like protein 5; fc receptor homolog 5; immune receptor translocation-associated protein 2; immunoglobulin superfamily receptor translocation associated 2 (IRTA2); CD307; PRO820; FLJ00333; FLJ00397; RP11-217A12.1; MGC119590; MGC119592; MGC119593; DKFZp667F216; DKFZp667E2019;
Gene ID	83416
mRNA Refseq	NM_001195388
Protein Refseq	NP_001182317
MIM	605877
UniProt ID	Q96RD9

 Tel: 1-631-559-9269 1-516-512-3133

 Email: info@creative-biomart.com  Fax: 1-631-938-8127

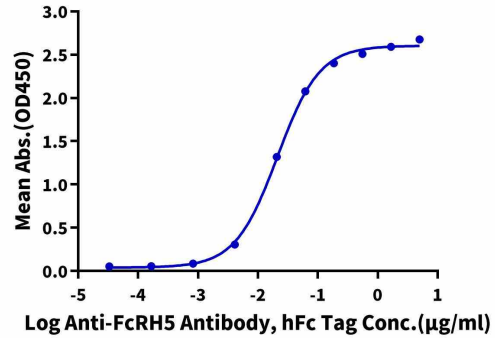
 45-1 Ramsey Road, Shirley, NY 11967, USA

Tris-Bis PAGE



Human FcRH5, His Tag ELISA

0.05 μ g Human FcRH5, His Tag Per Well



 Tel: 1-631-559-9269 1-516-512-3133

 Email: info@creative-biomart.com  Fax: 1-631-938-8127

 45-1 Ramsey Road, Shirley, NY 11967, USA