

Recombinant Human FCRL5 Protein, His-tagged, Primary Amine Labeling, Biotinylated

Cat. No. FCRL5-970HB Lot. No. (See product label)

SPECIFICATION

Product Overview	Biotinylated Primary Amine Labeling Recombinant Human FCRL5 Protein(Q96RD9-1)(Gln16-Gly851) is expressed from HEK293 with His tag at the C-Terminus.
Species	Human
Source	HEK293
ProteinLength	Gln16-Gly851
Form	Lyophilized from 0.22µm filtered solution in PBS, 100mM Arginine (pH 7.4). Normally 8% trehalose is added as protectant before lyophilization.
Storage	-20 to -80°C for 12 months as supplied from date of receipt. -80°C for 3 months after reconstitution. Recommend to aliquot the protein into smaller quantities for optimal storage. Please minimize freeze-thaw cycles.
Bio-activity	Immobilized Anti-FcRH5 Antibody, hFc Tag at 5µg/ml (100µl/well) on the plate. Dose response curve for Biotinylated Human FcRH5, His Tag with the EC50 of 35.6ng/ml determined by ELISA.
Molecular Mass	The protein has a predicted MW of 92.38 kDa. Due to glycosylation, the protein migrates to 100-120 kDa based on Bis-Tris PAGE result.
Endotoxin	Less than 1EU per µg by the LAL method.

 Tel: 1-631-559-9269 1-516-512-3133

 Email: info@creative-biomart.com  Fax: 1-631-938-8127

 45-1 Ramsey Road, Shirley, NY 11967, USA

Purity > 95% as determined by Bis-Tris PAGE > 90% as determined by HPLC

Conjugation Biotin

GENE INFORMATION

Official Symbol [FCRL5](#)

Synonyms FCRL5; Fc receptor-like 5; Fc receptor-like protein 5; BXMAS1; CD307e; FCRH5; IRTA2; fcR-like protein 5; fc receptor homolog 5; immune receptor translocation-associated protein 2; immunoglobulin superfamily receptor translocation associated 2 (IRTA2); CD307; PRO820; FLJ00333; FLJ00397; RP11-217A12.1; MGC119590; MGC119592; MGC119593; DKFZp667F216; DKFZp667E2019;

Gene ID [83416](#)

mRNA Refseq [NM_001195388](#)

Protein Refseq [NP_001182317](#)

MIM [605877](#)

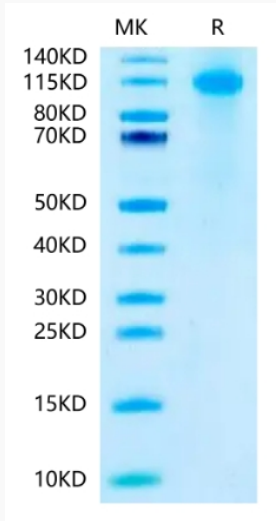
UniProt ID [Q96RD9](#)

 Tel: 1-631-559-9269 1-516-512-3133

 Email: info@creative-biomart.com  Fax: 1-631-938-8127

 45-1 Ramsey Road, Shirley, NY 11967, USA

SDS-PAGE



ELISA Data

 Tel: 1-631-559-9269 1-516-512-3133

 Email: info@creative-biomart.com  Fax: 1-631-938-8127

 45-1 Ramsey Road, Shirley, NY 11967, USA