

Recombinant Human FCRL6 Protein, His-tagged

Cat. No. FCRL6-1211H Lot. No. (See product label)

SPECIFICATION

Product Overview	Recombinant Human FCRL6 Protein (20-307aa) was expressed in E. coli with N-terminal His tag.
Species	Human
Source	E.coli
ProteinLength	20-307 a.a.
Form	Tris-based buffer, 50% glycerol.
Molecular Mass	35.7 kDa
AA Sequence	<p>LYLQAWPNPVFEGDALTLRCQGWNTPLSQVKFYRDGKFLHFSKENQTLSMGAAT VQSRGQYSCSGQVMYIPQTFTQTSETAMVQVQELFPPPVLSAIPSPEPREGSLVTL RCQTKLHPLRSALRLLFSFHKDGHTLQDRGPHPELCIPGAKEGDSGLYWCEVAPEG GQVQKQSPQLEVRVQAPVSRPVLTLHHGPADPAVGDMVQLLCEAQRGSPPILYSFY LDEKIVGNHSAPCGGTTSLFPVKSEQDAGNYSCEAENSVSRERSEPKKLSLKGSQ VLFTPASNW</p>
Purity	Greater than 90% as determined by SDS-PAGE.
Storage	The shelf life of liquid form is 6 months at -20 centigrade/-80 centigrade. The shelf life of lyophilized form is 12 months at -20 centigrade/-80 centigrade.

 Tel: 1-631-559-9269 1-516-512-3133

 Email: info@creative-biomart.com  Fax: 1-631-938-8127

 45-1 Ramsey Road, Shirley, NY 11967, USA

GENE INFORMATION

Gene Name FCRL6 Fc receptor like 6 [Homo sapiens (human)]

Official Symbol FCRL6

Synonyms FcRH6; FCRL6; Fc receptor-like protein 6; FcR-like protein 6; IFGP6; FcRH6; Fc receptor homolog 6

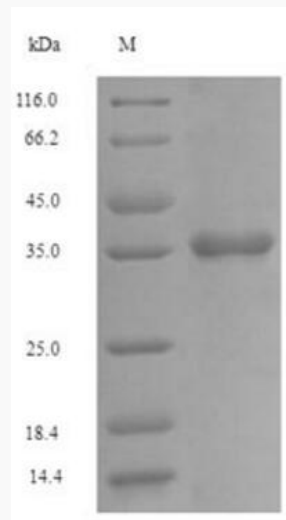
Gene ID 343413

mRNA Refseq NM_001004310.2

Protein Refseq NP_001004310.2

MIM 613562

UniProt ID Q6DN72



 Tel: 1-631-559-9269 1-516-512-3133

 Email: info@creative-biomart.com  Fax: 1-631-938-8127

 45-1 Ramsey Road, Shirley, NY 11967, USA