

Recombinant Human FCRL6 Protein (20-307 aa), His-tagged

Cat. No. FCRL6-1860H Lot. No. (See product label)

SPECIFICATION

Product Overview	Recombinant Human FCRL6 Protein (20-307 aa) is produced by Yeast expression system. This protein is fused with a 6xHis tag at the N-terminal. Research Area: Immunology. Protein Description: Partial.
Species	Human
Source	Yeast
ProteinLength	20-307 aa
Form	Tris-based buffer,50% glycerol
Molecular Mass	33.7 kDa
AA Sequence	LYLQAWPNPVFEGDALTLRCQGWNTPLSQVKFYRDGKFLHFSKENQTLSMGAAT VQSRGQYSCSGQVMYIPQTFTQTSETAMVQVQELFPPPVLSAIPSPEPREGSLVTL RCQTKLHPLRSALRLLFSFHKDGHTLQDRGPHPELCIPGAKEGDSGLYWCEVAPEG GQVQKQSPQLEVRVQAPVSRPVLTLHHGPADPAVGDMVQLLCEAQRGSPPILYSFY LDEKIVGNHSAPCGGTTSLFPVKSEQDAGNYSCEAENSVSRERSEPKKLSLKGSQ VLFTPASNW
Purity	> 90% as determined by SDS-PAGE.
Notes	Repeated freezing and thawing is not recommended. Store working aliquots at 4 centigrade for up to one week.

 Tel: 1-631-559-9269 1-516-512-3133

 Email: info@creative-biomart.com  Fax: 1-631-938-8127

 45-1 Ramsey Road, Shirley, NY 11967, USA

Storage

The shelf life is related to many factors, storage state, buffer ingredients, storage temperature and the stability of the protein itself. Generally, the shelf life of liquid form is 6 months at -20 centigrade/-80 centigrade. The shelf life of lyophilized form is 12 months at -20 centigrade/-80 centigrade.

Concentration

A hardcopy of COA with reconstitution instruction is sent along with the products.

GENE INFORMATION

Gene Name

FCRL6 Fc receptor-like 6 [Homo sapiens]

Official Symbol

FCRL6

Synonyms

FCRL6; Fc receptor-like 6; FcRH6; FLJ16056; IFGP6; fcR-like protein 6;

Gene ID

343413

mRNA Refseq

NM_001004310

Protein Refseq

NP_001004310

MIM

613562

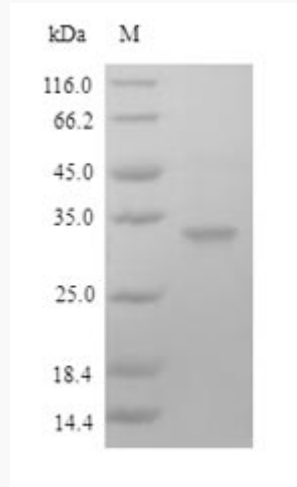
UniProt ID

Q6DN72

 Tel: 1-631-559-9269 1-516-512-3133

 Email: info@creative-biomart.com  Fax: 1-631-938-8127

 45-1 Ramsey Road, Shirley, NY 11967, USA



(Tris-Glycine gel) Discontinuous SDS-PAGE (reduced) with 5% enrichment gel and 15% separation gel.

 Tel: 1-631-559-9269 1-516-512-3133

 Email: info@creative-biomart.com  Fax: 1-631-938-8127

 45-1 Ramsey Road, Shirley, NY 11967, USA