

## Recombinant Human FCRL6 Protein (20-307 aa), His-tagged

Cat. No. FCRL6-2767H Lot. No. (See product label)

### SPECIFICATION

<b>Product Overview</b>	Recombinant Human FCRL6 Protein (20-307 aa) is produced by Baculovirus expression system. This protein is fused with a 10xHis tag at the N-terminal. Research Area: Immunology. Protein Description: Partial.
<b>Species</b>	Human
<b>Source</b>	Insect Cells
<b>ProteinLength</b>	20-307 aa
<b>Form</b>	Tris-based buffer,50% glycerol
<b>Molecular Mass</b>	34.2 kDa
<b>AA Sequence</b>	LYLQAWPNPVFEGDALTLRCQGWNTPLSQVKFYRDGKFLHFSKENQTLSMGAAT VQSRGQYSCSGQVMYIPQTFTQTSETAMVQVQELFPPPVLSAIPSPEPREGSLVTL RCQTKLHPLRSALRLLFSFHKDGHTLQDRGPHPELCIPGAKEGDSGLYWCEVAPEG GQVQKQSPQLEVRVQAPVSRPVLTLHHGPADPAVGDMVQLLCEAQRGSPPILYSFY LDEKIVGNHSAPCGGTTSLFPVKSEQDAGNYSCEAENSVSRERSEPKKLSLKGSQ VLFTPASNW
<b>Purity</b>	> 85% as determined by SDS-PAGE.
<b>Notes</b>	Repeated freezing and thawing is not recommended. Store working aliquots at 4 centigrade for up to one week.

 Tel: 1-631-559-9269 1-516-512-3133

 Email: [info@creative-biomart.com](mailto:info@creative-biomart.com)  Fax: 1-631-938-8127

 45-1 Ramsey Road, Shirley, NY 11967, USA

**Storage** The shelf life is related to many factors, storage state, buffer ingredients, storage temperature and the stability of the protein itself. Generally, the shelf life of liquid form is 6 months at -20 centigrade/-80 centigrade. The shelf life of lyophilized form is 12 months at -20 centigrade/-80 centigrade.

**Concentration** A hardcopy of COA will be sent along with the products. Please refer to it for detailed information.

## GENE INFORMATION

**Gene Name** FCRL6 Fc receptor-like 6 [ Homo sapiens ]

**Official Symbol** FCRL6

**Synonyms** FCRL6; Fc receptor-like 6; Fc receptor-like protein 6; FcRH6; FLJ16056; IFGP6; fcR-like protein 6; leukocyte receptor;

**Gene ID** 343413

**mRNA Refseq** NM\_001004310

**Protein Refseq** NP\_001004310

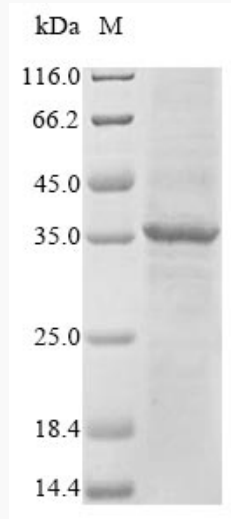
**MIM** 613562

**UniProt ID** Q6DN72

 Tel: 1-631-559-9269 1-516-512-3133

 Email: [info@creative-biomart.com](mailto:info@creative-biomart.com)  Fax: 1-631-938-8127

 45-1 Ramsey Road, Shirley, NY 11967, USA



(Tris-Glycine gel) Discontinuous SDS-PAGE (reduced) with 5% enrichment gel and 15% separation gel.

Tel: 1-631-559-9269 1-516-512-3133

Email: [info@creative-biomart.com](mailto:info@creative-biomart.com) Fax: 1-631-938-8127

45-1 Ramsey Road, Shirley, NY 11967, USA