

Recombinant Human FCRL6 protein, His-tagged

Cat. No. FCRL6-5105H Lot. No. (See product label)

SPECIFICATION

Product Overview	Recombinant Human FCRL6 protein(Q6DN72)(20-307aa), fused to N-terminal His tag, was expressed in HEK293.
Species	Human
Source	HEK293
ProteinLength	20-307aa
Form	If the delivery form is liquid, the default storage buffer is Tris/PBS-based buffer, 5%-50% glycerol. If the delivery form is lyophilized powder, the buffer before lyophilization is Tris/PBS-based buffer, 6% Trehalose, pH 8.0.
Molecular Mass	35.2 kDa
Purity	Greater than 85% as determined by SDS-PAGE.
Storage	Store at -20°C/-80°C upon receipt, aliquoting is necessary for multiple use. Avoid repeated freeze-thaw cycles.
Reconstitution	Please reconstitute protein in deionized sterile water to a concentration of 0.1-1.0 mg/mL. We recommend to add 5-50% of glycerol (final concentration) and aliquot for long-term storage at -20°C/-80°C. Our default final concentration of glycerol is 50%.

 Tel: 1-631-559-9269 1-516-512-3133

 Email: info@creative-biomart.com  Fax: 1-631-938-8127

 45-1 Ramsey Road, Shirley, NY 11967, USA

GENE INFORMATION

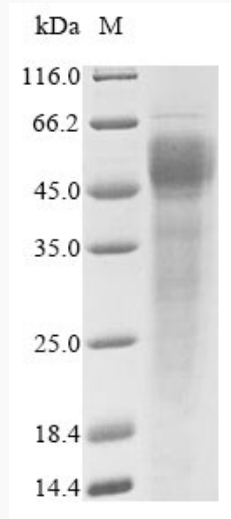
Gene Name	FCRL6 Fc receptor-like 6 [Homo sapiens]
Official Symbol	FCRL6
Synonyms	FCRL6; Fc receptor-like 6; Fc receptor-like protein 6; FcRH6; FLJ16056; IFGP6; fcR-like protein 6; leukocyte receptor; fc receptor homolog 6; Fc receptor-like protein 7; IgSF type I transmembrane receptor;
Gene ID	343413
mRNA Refseq	NM_001004310
Protein Refseq	NP_001004310
MIM	613562
UniProt ID	Q6DN72

 Tel: 1-631-559-9269 1-516-512-3133

 Email: info@creative-biomart.com  Fax: 1-631-938-8127

 45-1 Ramsey Road, Shirley, NY 11967, USA

SDS-PAGE



 Tel: 1-631-559-9269 1-516-512-3133

 Email: info@creative-biomart.com  Fax: 1-631-938-8127

 45-1 Ramsey Road, Shirley, NY 11967, USA