

Recombinant human FECH protein, C-Myc/DDK-tagged

Cat. No. FECH-01H Lot. No. (See product label)

SPECIFICATION

Product Overview	Recombinant human FECH protein, C-Myc/DDK-tagged, was expressed in HEK293T cell
Species	Human
Source	HEK293
Description	<p>The protein encoded by this gene is localized to the mitochondrion, where it catalyzes the insertion of the ferrous form of iron into protoporphyrin IX in the heme synthesis pathway. Mutations in this gene are associated with erythropoietic protoporphyria. Two transcript variants encoding different isoforms have been found for this gene. A pseudogene of this gene is found on chromosome 3.</p>
Molecular Mass	42.9 kDa
Purity	> 80% as determined by SDS-PAGE and Coomassie blue staining
Stability	Stable for 12 months from the date of receipt of the product under proper storage and handling conditions. Avoid repeated freeze-thaw cycles.
Storage	Store at -80°C.
Concentration	>50 ug/mL as determined by microplate BCA method
Storage Buffer	25 mM Tris.HCl, pH 7.3, 100 mM glycine, 10% glycerol

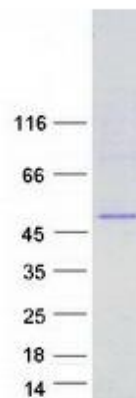
 Tel: 1-631-559-9269 1-516-512-3133

 Email: info@creative-biomart.com  Fax: 1-631-938-8127

 45-1 Ramsey Road, Shirley, NY 11967, USA

GENE INFORMATION

Gene Name	FECH ferrochelatase [Homo sapiens (human)]
Official Symbol	FECH
Synonyms	EPP; FCE; EPP1
Gene ID	2235
mRNA Refseq	NM_001012515.4
Protein Refseq	NP_001012533
MIM	612386
UniProt ID	P22830



 Tel: 1-631-559-9269 1-516-512-3133

 Email: info@creative-biomart.com  Fax: 1-631-938-8127

 45-1 Ramsey Road, Shirley, NY 11967, USA