

Recombinant Human FECH Protein, Myc/DDK-tagged, C13 and N15-labeled

Cat. No. FECH-1007H **Lot. No.** (See product label)

SPECIFICATION

Product Overview	FECH MS Standard C13 and N15-labeled recombinant protein (NP_001012533) with a C-terminal MYC/DDK tag, was expressed in HEK293 cells.
Species	Human
Source	HEK293
Description	The protein encoded by this gene is localized to the mitochondrion, where it catalyzes the insertion of the ferrous form of iron into protoporphyrin IX in the heme synthesis pathway. Mutations in this gene are associated with erythropoietic protoporphyria. Two transcript variants encoding different isoforms have been found for this gene. A pseudogene of this gene is found on chromosome 3.
Molecular Mass	48.63 kDa
AA Sequence	<p>M R S L G A N M A A A L R A A G V L L R D P L A S S S W R V C Q P W R W K S G A A A A A V T T E T A Q H A Q G A K P Q V Q P Q K R Y E S N I R K P K T G I L M L N M G G P E T L G D V H D F L L R L F L D R D L M T L P I Q N K L A P F I A K R R T P K I Q E Q Y R R I G G G S P I K I W T S K Q G E G M V K L L D E L S P N T A P H K Y Y I G F R Y V H P L T E E A I E E M E R D G L E R A I A F T Q Y P Q Y S C S T T G S S L N A I Y R Y N Q V G R K P T M K W S T I D R W P T H H L L I Q C F A D H I L K E L D H F P L E K R S E V V I L F S A H S L P M S V V N R G D P Y P Q E V S A T V Q K V M E R L E Y C N P Y R L V W Q S K V G P M P W L G P Q T D E S I K G L C E R G R K N I L L V P I A F T S D H I E T L Y E L D I E S Q V L A K E C G V E N I R R A E S L N G N P L F S K A L A D L V H S H I Q S N E L C S K Q L T L S C P L C V N P V C R E T K S F F T S Q Q L T R T R P L E Q K L I S E E D L A A N D I L D Y K D D D</p>

 Tel: 1-631-559-9269 1-516-512-3133

 Email: info@creative-biomart.com  Fax: 1-631-938-8127

 45-1 Ramsey Road, Shirley, NY 11967, USA

	DKV
Purity	> 80% as determined by SDS-PAGE and Coomassie blue staining
Stability	Stable for 3 months from receipt of products under proper storage and handling conditions.
Storage	Store at -80 centigrade. Avoid repeated freeze-thaw cycles.
Concentration	50 µg/mL as determined by BCA
Storage Buffer	100 mM glycine, 25 mM Tris-HCl, pH 7.3.

GENE INFORMATION

Gene Name	FECH ferrochelatase [Homo sapiens (human)]
Official Symbol	FECH
Synonyms	FECH; ferrochelatase; ferrochelatase (protoporphyrin); ferrochelatase, mitochondrial; protoporphyrin; heme synthase; heme synthetase; protoheme ferro-lyase; EPP; FCE;
Gene ID	2235
mRNA Refseq	NM_001012515
Protein Refseq	NP_001012533
MIM	612386
UniProt ID	P22830

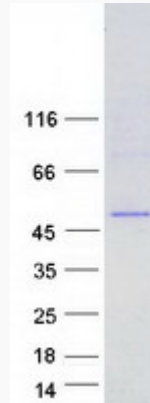
 Tel: 1-631-559-9269 1-516-512-3133

 Email: info@creative-biomart.com  Fax: 1-631-938-8127

 45-1 Ramsey Road, Shirley, NY 11967, USA



SDS-PAGE



Tel: 1-631-559-9269 1-516-512-3133

Email: info@creative-biomart.com Fax: 1-631-938-8127

45-1 Ramsey Road, Shirley, NY 11967, USA