

# Recombinant Full Length Human FECH Protein, C-Flag-tagged

Cat. No. FECH-1762HFL Lot. No. (See product label)

## SPECIFICATION

|                         |  |
|-------------------------|--|
| <b>Product Overview</b> | Recombinant Full Length Human FECH Protein, fused to Flag-tag at C-terminus, was expressed in Mammalian cells.   |
| <b>Species</b>          | Human  |
| <b>Source</b>           | Mammalian Cells  |
| <b>Description</b>      | The protein encoded by this gene is localized to the mitochondrion, where it catalyzes the insertion of the ferrous form of iron into protoporphyrin IX in the heme synthesis pathway. Mutations in this gene are associated with erythropoietic protoporphyria. Two transcript variants encoding different isoforms have been found for this gene. A pseudogene of this gene is found on chromosome 3.  |
| <b>Form</b>             | 25 mM Tris HCl, pH 7.3, 100 mM glycine, 10% glycerol.  |
| <b>Molecular Mass</b>   | 42.1 kDa   |
| <b>AA Sequence</b>      | MRS LGANMAAALRAAGVLLRDPLASSSWRVCQPWRWKSGAAAAAVTTETAQHAQ<br>GAKPQVQPQKRKPKTG ILM LNMGGPETLGDVHDFLLRLFLDRDLMTLPIQNKLAPFI<br>AKRRTPKIQEQYRRIGGGSPIKIWTSKQG EGMVKLLDELSPNTAPHKYYIGFRYVHP<br>LTEEAIEMERDGLERAI AFTQYPQYSCSTTGSSLNAIY RYY NQVGRKPTMKWSTID<br>RWPTHLLLIQCFADHILKELDHFPLEKRSEVVILFSAHSLPMSVVNRGDPYPQEV SA<br>TVQKV MERLEYCNPYRLVWQSKVGPMPWLGPQTDESIGLCERGRKNILLVPIAFT<br>SDHIETLYELDI EYSQVLAKECGVENIRRAESLNGNPLFSKALADLVHSHIQSNELCS<br>KQLTLSCPLCVNPVCRETKSFFTS QQL TRTRPLEQKLI SEEDLAANDILDYKDDDDK |

 Tel: 1-631-559-9269 1-516-512-3133

 Email: [info@creative-biomart.com](mailto:info@creative-biomart.com)  Fax: 1-631-938-8127

 45-1 Ramsey Road, Shirley, NY 11967, USA

|                         |   |
|-------------------------|---|
|                         | V   |
| <b>Purity</b>           | > 80% as determined by SDS-PAGE and Coomassie blue staining.  |
| <b>Stability</b>        | Stable for 12 months from the date of receipt of the product under proper storage and handling conditions. Avoid repeated freeze-thaw cycles. |
| <b>Storage</b>          | Store at -80 centigrade.  |
| <b>Concentration</b>    | >50 ug/mL as determined by microplate BCA method.   |
| <b>Preparation</b>      | Recombinant protein was captured through anti-DDK affinity column followed by conventional chromatography steps.                              |
| <b>Protein Families</b> | Druggable Genome  |
| <b>Protein Pathways</b> | Metabolic pathways, Porphyrin and chlorophyll metabolism  |
| <b>Full Length</b>      | Full L.   |

## GENE INFORMATION

|                        |  |
|------------------------|--|
| <b>Gene Name</b>       | FECH ferrochelatase [ Homo sapiens (human) ] |
| <b>Official Symbol</b> | FECH   |
| <b>Synonyms</b>        | EPP; FCE; EPP1                               |
| <b>Gene ID</b>         | 2235   |
| <b>mRNA Refseq</b>     | NM_000140.5                                  |

 Tel: 1-631-559-9269 1-516-512-3133

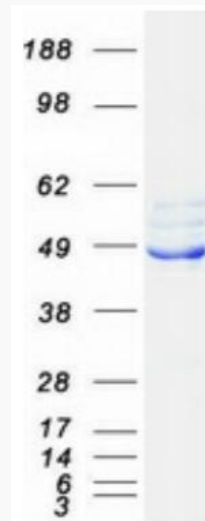
 Email: [info@creative-biomart.com](mailto:info@creative-biomart.com)  Fax: 1-631-938-8127

 45-1 Ramsey Road, Shirley, NY 11967, USA

**Protein Refseq**      NP\_000131.2

**MIM**                    612386

**UniProt ID**            P22830



Coomassie blue staining of purified FECH protein.

 Tel: 1-631-559-9269    1-516-512-3133

 Email: [info@creative-biomart.com](mailto:info@creative-biomart.com)     Fax: 1-631-938-8127

 45-1 Ramsey Road, Shirley, NY 11967, USA