

Recombinant Human FECH Protein, Myc/DDK-tagged, C13 and N15-labeled

Cat. No. FECH-2604H **Lot. No.** (See product label)

SPECIFICATION

Product Overview

FECH MS Standard C13 and N15-labeled recombinant protein (NP_000131) with a C-terminal MYC/DDK tag, was expressed in HEK293 cells.

Species

Human

Source

HEK293

Description

The protein encoded by this gene is localized to the mitochondrion, where it catalyzes the insertion of the ferrous form of iron into protoporphyrin IX in the heme synthesis pathway. Mutations in this gene are associated with erythropoietic protoporphyria. Two transcript variants encoding different isoforms have been found for this gene. A pseudogene of this gene is found on chromosome 3.

Molecular Mass

47.9 kDa

AA Sequence

MRLGANMAAALRAAGVLLRDPLASSSWRVCQPWRWKSGAAAAVTTETAQHAQ
 GAKPQVQPQKRKPKTGILMLNMGGPETLGDVHDFLLRFLDRDLMTLPIQNKLAPFI
 AKRRTPKIQEQYRRIGGGSPIKIWTSKQGEGMVKLLDELSPNTAPHKYYIGFRYVHPL
 TEEAIEEMERDGLERAI AFTQYPQYSCSTTGSSLNAIYRYYNQVGRKPTMKWSTIDR
 WPTHLLLIQCFADHILKELDHFPLEKRSEVVILFSAHSLPMSVVNRGDPYPQEVSATV
 QKVMERLEYCNPYRLVWQSKVGPMPWLGPQTDESIKGLCERGRKNILLVPIAFTSD
 HIETLYELDIEYSQVLAKECGVENIRRAESLNGNPLFSKALADLVHSHIQSNELCSKQL
 TLSCPLCVNPVCRETKSFFTSQQLTRTRPLEQKLISEEDLAANDILDYKDDDDKV

 Tel: 1-631-559-9269 1-516-512-3133

 Email: info@creative-biomart.com  Fax: 1-631-938-8127

 45-1 Ramsey Road, Shirley, NY 11967, USA

Purity	> 80% as determined by SDS-PAGE and Coomassie blue staining
Stability	Stable for 3 months from receipt of products under proper storage and handling conditions.
Storage	Store at -80 centigrade. Avoid repeated freeze-thaw cycles.
Concentration	50 µg/mL as determined by BCA
Storage Buffer	100 mM glycine, 25 mM Tris-HCl, pH 7.3.

GENE INFORMATION

Gene Name	FECH ferrochelatase [Homo sapiens (human)]
Official Symbol	FECH
Synonyms	FECH; ferrochelatase; ferrochelatase (protoporphyrin); ferrochelatase, mitochondrial; protoporphyrin; heme synthase; heme synthetase; protoheme ferro-lyase; EPP; FCE;
Gene ID	2235
mRNA Refseq	NM_000140
Protein Refseq	NP_000131
MIM	612386
UniProt ID	P22830

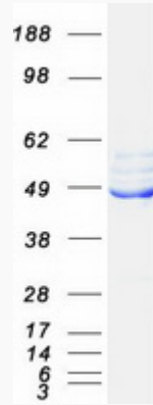
 Tel: 1-631-559-9269 1-516-512-3133

 Email: info@creative-biomart.com  Fax: 1-631-938-8127

 45-1 Ramsey Road, Shirley, NY 11967, USA



SDS-PAGE



Tel: 1-631-559-9269 1-516-512-3133

Email: info@creative-biomart.com Fax: 1-631-938-8127

45-1 Ramsey Road, Shirley, NY 11967, USA