

## Recombinant Human FECH Protein, GST-tagged

Cat. No. FECH-4065H Lot. No. (See product label)

### SPECIFICATION

<b>Product Overview</b>	Human FECH full-length ORF ( NP_000131, 1 a.a. - 423 a.a.) recombinant protein with GST-tag at N-terminal.
<b>Species</b>	Human
<b>Source</b>	Wheat Germ
<b>Description</b>	The protein encoded by this gene is localized to the mitochondrion, where it catalyzes the insertion of the ferrous form of iron into protoporphyrin IX in the heme synthesis pathway. Mutations in this gene are associated with erythropoietic protoporphyria. Two transcript variants encoding different isoforms have been found for this gene. [provided by RefSeq]
<b>Molecular Mass</b>	72.16 kDa
<b>AA Sequence</b>	<p>M R S L G A N M A A A L R A A G V L L R D P L A S S S W R V C Q P W R W K S G A A A A A V T T E T A Q H A Q  G A K P Q V Q P Q K R K P K T G I L M L N M G G P E T L G D V H D F L L R L F L D Q D L M T L P I Q N K L A P F I  A K R R T P K I Q E Q Y R R I G G G S P I K I W T S K Q G E G M V K L L D E L S P N T A P H K Y Y I G F R Y V H P L  T E E A I E E M E R D G L E R A I A F T Q Y P Q Y S C S T T G S S L N A I Y R Y N Q V G R K P T M K W S T I D R  W P T H H L L I Q C F A D H I L K E L D H F P L E K R S E V V I L F S A H S L P M S V V N R G D P Y P Q E V S A T V  Q K V M E R L E Y C N P Y R L V W Q S K V G P M P W L G P Q T D E S I K G L C E R G R K N I L L V P I A F T S D  H I E T L Y E L D I E Y S Q V L A K E C G V E N I R R A E S L N G N P L F S K A L A D L V H S H I Q S N E L C S K Q L  T L S C P L C V N P V C R E T K S F F T S Q Q L</p>
<b>Applications</b>	Enzyme-linked Immunoabsorbent Assay

 Tel: 1-631-559-9269 1-516-512-3133

 Email: [info@creative-biomart.com](mailto:info@creative-biomart.com)  Fax: 1-631-938-8127

 45-1 Ramsey Road, Shirley, NY 11967, USA

Western Blot (Recombinant protein)  
 Antibody Production  
 Protein Array

<b>Notes</b>	Best use within three months from the date of receipt of this protein.
<b>Storage</b>	Store at -80 centigrade. Aliquot to avoid repeated freezing and thawing.
<b>Storage Buffer</b>	50 mM Tris-HCl, 10 mM reduced Glutathione, pH=8.0 in the elution buffer.

## GENE INFORMATION

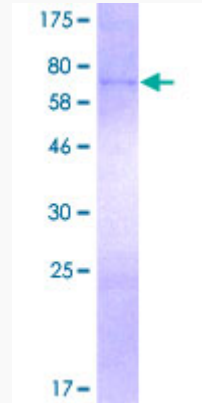
<b>Gene Name</b>	<a href="#">FECH ferrochelatase [ Homo sapiens ]</a>
<b>Official Symbol</b>	<a href="#">FECH</a>
<b>Synonyms</b>	FECH; ferrochelatase; ferrochelatase (protoporphyrin); ferrochelatase, mitochondrial; protoporphyrin; heme synthase; heme synthetase; protoheme ferro-lyase; EPP; FCE;
<b>Gene ID</b>	<a href="#">2235</a>
<b>mRNA Refseq</b>	<a href="#">NM_000140</a>
<b>Protein Refseq</b>	<a href="#">NP_000131</a>
<b>MIM</b>	<a href="#">612386</a>
<b>UniProt ID</b>	<a href="#">P22830</a>

 Tel: 1-631-559-9269 1-516-512-3133

 Email: [info@creative-biomart.com](mailto:info@creative-biomart.com)  Fax: 1-631-938-8127

 45-1 Ramsey Road, Shirley, NY 11967, USA

**Quality Control  
Testing**



12.5% SDS-PAGE Stained with Coomassie Blue.

 Tel: 1-631-559-9269 1-516-512-3133

 Email: [info@creative-biomart.com](mailto:info@creative-biomart.com)  Fax: 1-631-938-8127

 45-1 Ramsey Road, Shirley, NY 11967, USA