

Recombinant Human FECH protein, His&Myc-tagged

Cat. No. FECH-4535H Lot. No. (See product label)

SPECIFICATION

Product Overview	Recombinant Human FECH protein(P22830)(55-423aa), fused with N-terminal His tag and C-terminal Myc tag, was expressed in E.coli.
Species	Human
Source	E.coli
ProteinLength	55-423aa
Form	If the delivery form is liquid, the default storage buffer is Tris/PBS-based buffer, 5%-50% glycerol. If the delivery form is lyophilized powder, the buffer before lyophilization is Tris/PBS-based buffer, 6% Trehalose, pH 8.0.
Molecular Mass	49.6 kDa
Purity	Greater than 90% as determined by SDS-PAGE.
Storage	Store at -20°C/-80°C upon receipt, aliquoting is necessary for mutiple use. Avoid repeated freeze-thaw cycles.
Reconstitution	We recommend that this vial be briefly centrifuged prior to opening to bring the contents to the bottom. Please reconstitute protein in deionized sterile water to a concentration of 0.1-1.0 mg/mL. We recommend to add 5-50% of glycerol (final concentration) and aliquot for long-term storage at -20°C/-80°C.

 Tel: 1-631-559-9269 1-516-512-3133

 Email: info@creative-biomart.com  Fax: 1-631-938-8127

 45-1 Ramsey Road, Shirley, NY 11967, USA

AA Sequence

GAKPQVQPQKRKPKTGILMLNMGGPETLGDVHDFLLRLFLDRDLMTLPIQNKLAPFI
 AKRRTPKIQEQYRRIGGGSPIKIWTSKQGEGMVKLLDELSPNTAPHKYYIGFRYVHPL
 TEEAIEEMERDGLERAI AFTQYPQYSCSTTGSSLNAIYRYYNQVGRKPTMKWSTIDR
 WPTHLLLIQCFADHILKELDHFPLEKRSEVVILFSAHSLPMSVVNRGDPYPQEVSATV
 QKVMERLEYCNPYRLVWQSKVGPMPWLGPQTDESIKGLCERGRKNILLVPIAFTSD
 HIETLYELDIEYSQVLAKECGVENIRRAESLNGNPLFSKALADLVHSHIQSNELCSKQL
 TLSCPLCVNPVCRETKSFFTSQQL

GENE INFORMATION

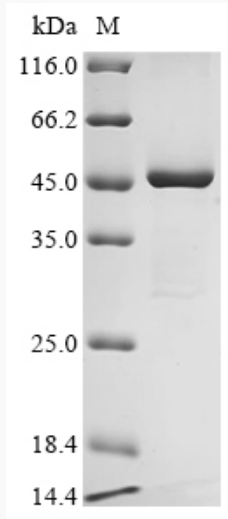
Gene Name	FECH ferrochelatase [Homo sapiens]
Official Symbol	FECH
Synonyms	FECH; ferrochelatase; ferrochelatase (protoporphyria); ferrochelatase, mitochondrial; protoporphyria; heme synthase; heme synthetase; protoheme ferro-lyase; EPP; FCE;
Gene ID	2235
mRNA Refseq	NM_000140
Protein Refseq	NP_000131
MIM	612386
UniProt ID	P22830

 Tel: 1-631-559-9269 1-516-512-3133

 Email: info@creative-biomart.com  Fax: 1-631-938-8127

 45-1 Ramsey Road, Shirley, NY 11967, USA

SDS-PAGE



 Tel: 1-631-559-9269 1-516-512-3133

 Email: info@creative-biomart.com  Fax: 1-631-938-8127

 45-1 Ramsey Road, Shirley, NY 11967, USA