

Recombinant Human FEN1 Protein, His-tagged

Cat. No. FEN1-013H Lot. No. (See product label)

SPECIFICATION

Product Overview Recombinant Human FEN1 protein (2-380) with a C-terminal His-tag was expressed in E.coli

Species Human

Source E.coli

ProteinLength 2-380

Description The protein encoded by this gene removes 5' overhanging flaps in DNA repair and processes the 5' ends of Okazaki fragments in lagging strand DNA synthesis. Direct physical interaction between this protein and AP endonuclease 1 during long-patch base excision repair provides coordinated loading of the proteins onto the substrate, thus passing the substrate from one enzyme to another. The protein is a member of the XPG/RAD2 endonuclease family and is one of ten proteins essential for cell-free DNA replication. DNA secondary structure can inhibit flap processing at certain trinucleotide repeats in a length-dependent manner by concealing the 5' end of the flap that is necessary for both binding and cleavage by the protein encoded by this gene. Therefore, secondary structure can deter the protective function of this protein, leading to site-specific trinucleotide expansions.

Molecular Mass 43.8 kDa

Purity ≥85% estimated by SDS-PAGE

 Tel: 1-631-559-9269 1-516-512-3133

 Email: info@creative-biomart.com  Fax: 1-631-938-8127

 45-1 Ramsey Road, Shirley, NY 11967, USA

| | |
|-----------------------|----------------------------------------------------------|
| Stability | ≥ 1 year |
| Storage | -80 centigrade |
| Storage Buffer | 50 mM Tris, pH 8.0, containing 1 mM DTT and 10% glycerol |
| Shipping | Dry ice in continental US, may vary elsewhere. |

GENE INFORMATION

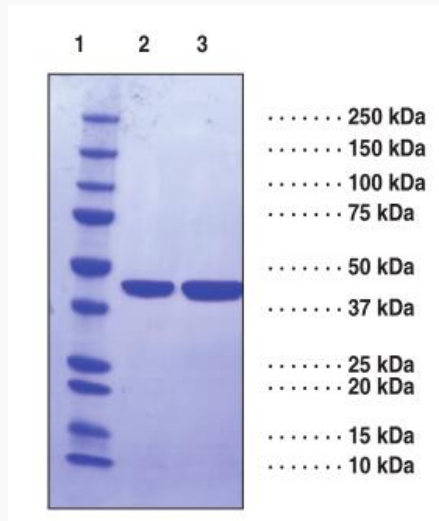
| | |
|------------------------|--------------------------------------------------------------------------------------------------------------------------------|
| Gene Name | FEN1 flap structure-specific endonuclease 1 [Homo sapiens (human)] |
| Official Symbol | FEN1 |
| Synonyms | FEN1; flap structure-specific endonuclease 1; MF1; RAD2; FEN-1; lap endonuclease 1; DNase IV; maturation factor-1; EC 3.1.26.4 |
| Gene ID | 2237 |
| mRNA Refseq | NM_004111 |
| Protein Refseq | NP_004102 |
| MIM | 600393 |
| UniProt ID | P39748 |

 Tel: 1-631-559-9269 1-516-512-3133

 Email: info@creative-biomart.com  Fax: 1-631-938-8127

 45-1 Ramsey Road, Shirley, NY 11967, USA

**SDS-PAGE Analysis
of FEN1**

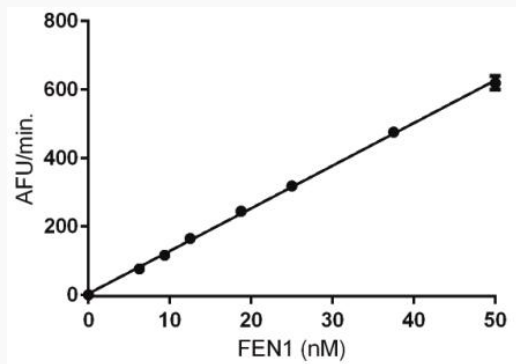


Lane 1: MW Markers

Lane 2: FEN1 (2 g)

Lane 3: FEN1 (4 g)

**FEN1 Enzyme
Titration**



 Tel: 1-631-559-9269 1-516-512-3133

 Email: info@creative-biomart.com  Fax: 1-631-938-8127

 45-1 Ramsey Road, Shirley, NY 11967, USA