

Recombinant Human FERMT2 protein, His-tagged

Cat. No. FERMT2-6743H Lot. No. (See product label)

SPECIFICATION

Product Overview	Recombinant Human FERMT2 protein(Q96AC1)(1-680aa), fused with C-terminal His tag, was expressed in E.coli.
Species	Human
Source	E.coli
ProteinLength	1-680a.a.
Tag	His
Form	If the delivery form is liquid, the default storage buffer is Tris/PBS-based buffer, 5%-50% glycerol. If the delivery form is lyophilized powder, the buffer before lyophilization is Tris/PBS-based buffer, 6% Trehalose, pH 8.0.
Molecular Mass	83.8 kDa
Purity	Greater than 85% as determined by SDS-PAGE.
Storage	Store at -20°C/-80°C upon receipt, aliquoting is necessary for mutiple use. Avoid repeated freeze-thaw cycles.
Reconstitution	We recommend that this vial be briefly centrifuged prior to opening to bring the contents to the bottom. Please reconstitute protein in deionized sterile water to a concentration of 0.1-1.0 mg/mL.We recommend to add 5-50% of glycerol (final

 Tel: 1-631-559-9269 1-516-512-3133

 Email: info@creative-biomart.com  Fax: 1-631-938-8127

 45-1 Ramsey Road, Shirley, NY 11967, USA

concentration) and aliquot for long-term storage at -20°C/-80°C.

AA Sequence

MALDGIRMPDGCYADGTWELSVHVTDLNRDVTLRVTGEVHIGGVMLKLVEKLDVKK
 DWSDHALWWEKKRTWLLKTHWTLDKYGIQADAKLQFTPQHKLLRLQLPNMKYVKV
 KVNFSDRVFKAVSDICKTFNIRHPEELSLKKPRDPTKKKKKKLDDQSEDEALELEGP
 LITPGSGSIYSSPGLYSKTMTPTYDAHDGSPLSPTSAWFGDSALSEGNPGILAVSQPI
 TSPEILAKMFKPQALLDKAKINQGWLDSSRSLMEQDVKENEALLLRFKYYSFFDLNP
 KYDAIRINQLYEQAKWAILLEEIECTEEEMMMFAALQYHINKLSIMTSENHLNNSDKE
 VDEVDAALSDLEITLEGGKTSTILGDITSIPELADYIKVFKPKKLTGKYKQYWCTFKDT
 SISCYKSKEESSGTPAHQMNLRGCEVTPDVNISGQKFNIKLLIPVAEGMNEIWLRC
 NEKQYAHWMAACRLASKGKTMASSYNLEVQNILSFLKMQHLNPDQLIPEQITTDI
 TPECLVSPRYLKKYKNKQITARILEAHQNVAQMSLIEAKMRFIQAWQSLPEFGITHFIA
 RFQGGKKEELIGIAYNRLIRMDASTGDAIKTWRFNSMKQWNVNWEIKMVTVEFADE
 VRLSFICTEVDCKVVHEFIGGYIFLSTRAKDQNESLDEEMFYKLTSGWV

GENE INFORMATION

Gene Name FERMT2 fermitin family member 2 [Homo sapiens]

Official Symbol FERMT2

Synonyms

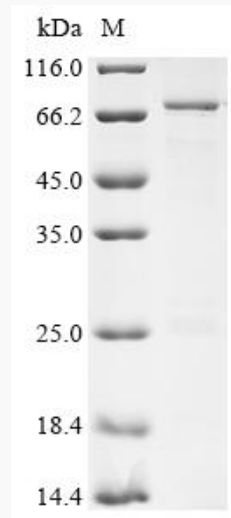
FERMT2; fermitin family member 2; fermitin family homolog 2 (Drosophila) , pleckstrin homology domain containing, family C (with FERM domain) member 1 , PLEKHC1; fermitin family homolog 2; KIND2; kindlin 2; mig 2; UNC112B; kindlin-2; mitogen inducible gene 2 protein; mitogen-inducible gene 2 protein; PH domain-containing family C member 1; pleckstrin homology domain-containing family C member 1; pleckstrin homology domain containing, family C member 1; pleckstrin homology domain containing, family C (with FERM domain) member 1; MIG2; mig-2; UNC112; PLEKHC1; FLJ34213; FLJ44462; DKFZp686G11125;

 Tel: 1-631-559-9269 1-516-512-3133

 Email: info@creative-biomart.com  Fax: 1-631-938-8127

 45-1 Ramsey Road, Shirley, NY 11967, USA

Gene ID	10979
mRNA Refseq	NM_001134999
Protein Refseq	NP_001128471
MIM	607746
UniProt ID	Q96AC1

SDS-PAGE

 Tel: 1-631-559-9269 1-516-512-3133

 Email: info@creative-biomart.com  Fax: 1-631-938-8127

 45-1 Ramsey Road, Shirley, NY 11967, USA