

Recombinant Human FES Protein, GST-tagged

Cat. No. FES-4078H Lot. No. (See product label)

SPECIFICATION

Product Overview	Human FES full-length ORF (AAH35357, 1 a.a. - 822 a.a.) recombinant protein with GST-tag at N-terminal.
Species	Human
Source	Wheat Germ
Description	This gene encodes the human cellular counterpart of a feline sarcoma retrovirus protein with transforming capabilities. The gene product has tyrosine-specific protein kinase activity and that activity is required for maintenance of cellular transformation. Its chromosomal location has linked it to a specific translocation event identified in patients with acute promyelocytic leukemia but it is also involved in normal hematopoiesis as well as growth factor and cytokine receptor signaling. Alternative splicing results in multiple variants encoding different isoforms
Molecular Mass	116.16 kDa
AA Sequence	MGFSSEL CSPQGHGVLQQMQEAE LRLLEGMRKWMAQRVKSDREYAGLLHHMSLQ DSGGQSRAISPDSPISQSWAEITSQTEGLSRLLRQHAEDLNSGPLSKLSLLIRERQQL RKTYSEQWQQLQQELTKTHSQDIEKLKSQYRALARDSAQAKRKYQEASKDKDRDK AKDKYVRSLWKLFAHNNRYVLGVRAAQLHHQHHLQLLLPGLLRSLQDLHEEMACIL KEILQEYLEISSLVQDEVVAIHREMAAAAARIQPEAEYQGFLRQYGSAPDVPPCVTFD ESLLEEGEPLEPGELQLNELTVESVQHTLTSVTDELAVATEMVFRRQEMVTQLQQEL RNEEENTHPRERVQLLGKRQVLQEALQGLQVALCSQAKLQAQQELLQTKLEHLGP

 Tel: 1-631-559-9269 1-516-512-3133

 Email: info@creative-biomart.com  Fax: 1-631-938-8127

 45-1 Ramsey Road, Shirley, NY 11967, USA

GEPPPVLLLQDDRHSTSSSEQEREGGRTPTLEILKSHISGIFRPKFSLPPPLQLIPEVQ
 KPLHEQLWYHGAIPRAEVAELLVHSGDFLVRESQKGQYVLSVLWDGLPRHFIIQSL
 DNLYRLEGEFSPSIPLLDHLLSTQQPLTKKSGVVLHRAVPKDKWVLNHEDLVLGEQI
 GRGNFGEVFSGRRLRADNTLVAVKSCRETLPPDLKAKFLQEARILKQYSHPNIVRLIGV
 CTQKQPIYVMELVQGGDFLTFLRTEGARLRVKTLLQMVGDAAAGMEYLESKCCIHR
 DLAARNCLVTEKNVLKISDFGMSREEADGVYAASGGLRQVPVKWTAPEALNYGRYS
 SESDVWSFGILLWETFSLGASYPNLSNQQTREFVEKGGRLPCPELCPDAVFRLE
 QCWAYEPGQRPSFSTIYQELQSIRKRHR

Applications	Kinase Assay Enzyme-linked Immunoabsorbent Assay Western Blot (Recombinant protein) Antibody Production Protein Array
---------------------	---

Notes	Best use within three months from the date of receipt of this protein.
--------------	--

Storage	Store at -80 centigrade. Aliquot to avoid repeated freezing and thawing.
----------------	--

Storage Buffer	50 mM Tris-HCl, 10 mM reduced Glutathione, pH=8.0 in the elution buffer.
-----------------------	--

GENE INFORMATION

Gene Name	FES feline sarcoma oncogene [Homo sapiens]
------------------	--

Official Symbol	FES
------------------------	---------------------

Synonyms	FES; feline sarcoma oncogene; feline sarcoma (Snyder Theilen) viral (v fes)/Fujinami avian sarcoma (PRCII) viral (v fps) oncogene homolog; tyrosine-protein kinase Fes/Fps; c fes/fps protein; FPS; Oncogene FES; feline sarcoma virus; p93c-fes; proto-oncogene c-Fes; proto-oncogene c-Fps; Oncogene FES, feline sarcoma virus;
-----------------	--

 Tel: 1-631-559-9269 1-516-512-3133

 Email: info@creative-biomart.com  Fax: 1-631-938-8127

 45-1 Ramsey Road, Shirley, NY 11967, USA

proto-oncogene tyrosine-protein kinase Fes/Fps; feline sarcoma/Fujinami avian sarcoma oncogene homolog; feline sarcoma (Snyder-Theilen) viral (v-fes)/Fujinami avian sarcoma (PRCII) viral (v-fps) oncogene homolog;

Gene ID [2242](#)

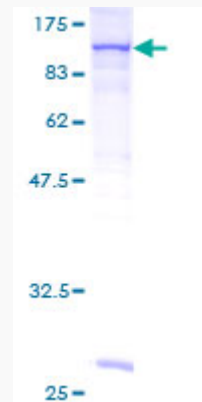
mRNA Refseq [NM_001143783](#)

Protein Refseq [NP_001137255](#)

MIM [190030](#)

UniProt ID [P07332](#)

Quality Control Testing



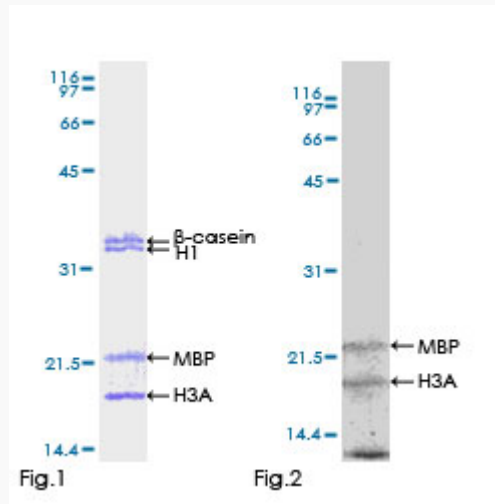
12.5% SDS-PAGE Stained with Coomassie Blue.

 Tel: 1-631-559-9269 1-516-512-3133

 Email: info@creative-biomart.com  Fax: 1-631-938-8127

 45-1 Ramsey Road, Shirley, NY 11967, USA

Application Image



Kinase Assay

Tel: 1-631-559-9269 1-516-512-3133

Email: info@creative-biomart.com Fax: 1-631-938-8127

45-1 Ramsey Road, Shirley, NY 11967, USA