

Recombinant Human FFAR2 Protein, GST-tagged

Cat. No. FFAR2-4085H Lot. No. (See product label)

SPECIFICATION

Product Overview	Human FFAR2 partial ORF (NP_005297.1, 231 a.a. - 330 a.a.) recombinant protein with GST tag at N-terminal.
Species	Human
Source	Wheat Germ
ProteinLength	231-330 a.a.
Description	This gene encodes a member of the GP40 family of G protein-coupled receptors that are clustered together on chromosome 19. The encoded protein is a receptor for short chain free fatty acids and may be involved in the inflammatory response and in regulating lipid plasma levels. [provided by RefSeq]
Molecular Mass	36.63 kDa
AA Sequence	FLVCFGPYNVSHLVGYHQRKSPWWRSIAVVFSSLNASLDPLLFFYFSSSVVRRAFGR GLQVLRNQGSLLGRRGKDTAEGTNEDRGGVQGGEGMPSSDFTTE
Applications	Enzyme-linked Immunoabsorbent Assay Western Blot (Recombinant protein) Antibody Production Protein Array
Notes	Best use within three months from the date of receipt of this protein.

 Tel: 1-631-559-9269 1-516-512-3133

 Email: info@creative-biomart.com  Fax: 1-631-938-8127

 45-1 Ramsey Road, Shirley, NY 11967, USA

Storage Store at -80 centigrade. Aliquot to avoid repeated freezing and thawing.

Storage Buffer 50 mM Tris-HCl, 10 mM reduced Glutathione, pH=8.0 in the elution buffer.

GENE INFORMATION

Gene Name [FFAR2 free fatty acid receptor 2 \[Homo sapiens \]](#)

Official Symbol [FFAR2](#)

Synonyms FFA2R; GPR43; Free Fatty Acid Receptor 2; G-Protein Coupled Receptor 43; GPR43; Free Fatty Acid Activated Receptor 2; G Protein-Coupled Receptor 43; Fatty Acid Receptor 2; GPCR43; FFA2R; FFA2; free fatty acid receptor 2

Gene ID [2867](#)

mRNA Refseq [NM_005306](#)

Protein Refseq [NP_005297](#)

MIM [603823](#)

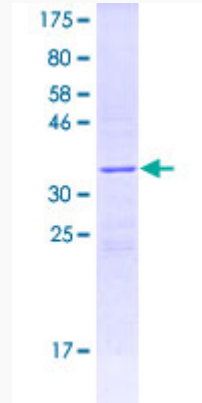
UniProt ID [O15552](#)

 Tel: 1-631-559-9269 1-516-512-3133

 Email: info@creative-biomart.com  Fax: 1-631-938-8127

 45-1 Ramsey Road, Shirley, NY 11967, USA

**Quality Control
Testing**



12.5% SDS-PAGE Stained with Coomassie Blue

 Tel: 1-631-559-9269 1-516-512-3133

 Email: info@creative-biomart.com  Fax: 1-631-938-8127

 45-1 Ramsey Road, Shirley, NY 11967, USA