

Active Recombinant Human FGF1 protein

Cat. No. FGF1-0272H **Lot. No.** (See product label)

SPECIFICATION

| | |
|-------------------------|---|
| Product Overview | Active Recombinant Human FGF1 protein(P05230-1)(Phe16-Asp155) is expressed from E.coli without tag. |
| Species | Human |
| Source | E.coli |
| ProteinLength | 16-155 aa |
| Form | Lyophilized from 0.22 µm filtered solution in PBS (pH 7.4). |
| Bio-activity | Measured in a cell proliferation assay using Balb/c 3T3 mouse embryonic fibroblasts. The ED50 for this effect is typically 0.1-0.7 ng/mL. |
| Molecular Mass | The protein has a predicted MW of 15.83 kDa same as Bis-Tris PAGE result. |
| Endotoxin | Less than 0.1 EU per µg by the LAL method. |
| Purity | > 95% as determined by Bis-Tris PAGE > 95% as determined by HPLC |
| Storage | -20 to -80°C for 12 months as supplied from date of receipt. -80°C for 3 months after reconstitution. Recommend to aliquot the protein into smaller quantities for optimal storage. Please minimize freeze-thaw cycles. |
| Reconstitution | Dissolve the lyophilized protein in distilled water. |

 Tel: 1-631-559-9269 1-516-512-3133

 Email: info@creative-biomart.com  Fax: 1-631-938-8127

 45-1 Ramsey Road, Shirley, NY 11967, USA

GENE INFORMATION

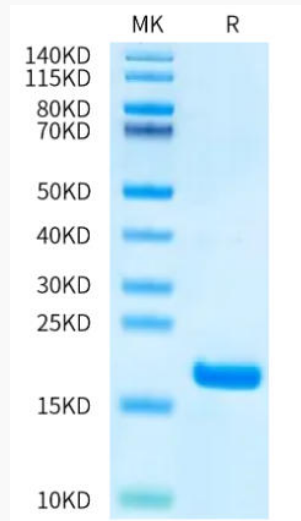
| | |
|------------------------|--|
| Gene Name | FGF1 fibroblast growth factor 1 (acidic) [Homo sapiens] |
| Official Symbol | FGF1 |
| Synonyms | FGF1; fibroblast growth factor 1 (acidic); FGFA; fibroblast growth factor 1; AFGF; ECGF; ECGF beta; ECGFA; ECGFB; endothelial cell growth factor; alpha; beta; FGF alpha; GLIO703; HBGF1; heparin binding growth factor 1; heparin-binding growth factor 1; beta-endothelial cell growth factor; endothelial cell growth factor, beta; endothelial cell growth factor, alpha; FGF-1; HBGF-1; ECGF-beta; FGF-alpha; |
| Gene ID | 2246 |
| mRNA Refseq | NM_000800 |
| Protein Refseq | NP_000791 |
| MIM | 131220 |
| UniProt ID | P05230 |

 Tel: 1-631-559-9269 1-516-512-3133

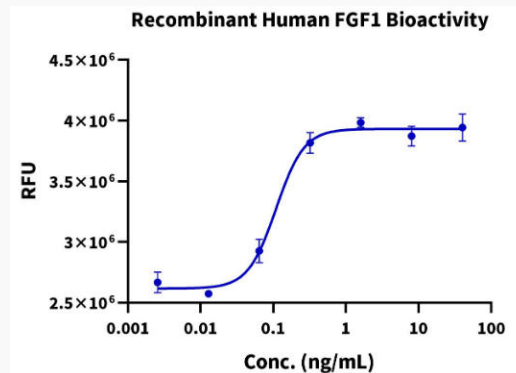
 Email: info@creative-biomart.com  Fax: 1-631-938-8127

 45-1 Ramsey Road, Shirley, NY 11967, USA

Bis-Tris PAGE



Cell Based Assay



 Tel: 1-631-559-9269 1-516-512-3133

 Email: info@creative-biomart.com  Fax: 1-631-938-8127

 45-1 Ramsey Road, Shirley, NY 11967, USA