

Active Recombinant Human FGF10 protein

Cat. No. FGF10-15H **Lot. No.** (See product label)

SPECIFICATION

Product Overview	Active Recombinant Human FGF10 protein(O15520)(40-208 aa) was expressed in E. coli.
Species	Human
Source	E. coli
ProteinLength	40-208 aa
Form	Lyophilized from a 0.2 µ filtered concentrated solution in 2 × PBS, pH 7.4.
Bio-activity	Fully biologically active when compared to standard. The ED50 as determined by thymidine uptake assay using FGF-receptors transfected BaF3 cells is less than 0.5 ng/ml, corresponding to a specific activity of > 2.0 × 10 ⁶ IU/mg.
Molecular Mass	Approximately 19.1 kDa, a single, non-glycosylated polypeptide chain containing 169 amino acids.
AASequence	LGQDMVSPEA TNSSSSFSS PSSAGRHVRS YNHLQGDVRW RKLFSFTKYF LKIEKNGKVS GTKKENCPYS ILEITSVEIG VVAVKAINSN YYLAMNKKGK LYGSKEFNND CKLKERIEEN GYNTYASFNW QHNGRQMYVA LNGKGAPRRG QKTRRKNTSA HFLPMVVHS
Endotoxin	Less than 1 EU/g of rHuKGF-2/FGF-10 as determined by LAL method.

 Tel: 1-631-559-9269 1-516-512-3133

 Email: info@creative-biomart.com  Fax: 1-631-938-8127

 45-1 Ramsey Road, Shirley, NY 11967, USA

Purity	> 97 % by SDS-PAGE and HPLC analyses.
Storage	Use a manual defrost freezer and avoid repeated freeze-thaw cycles. - 12 months from date of receipt, -20 to -70 °C as supplied. - 1 month, 2 to 8 °C under sterile conditions after reconstitution. - 3 months, -20 to -70 °C under sterile conditions after reconstitution.
Reconstitution	We recommend that this vial be briefly centrifuged prior to opening to bring the contents to the bottom. Reconstitute in sterile distilled water or aqueous buffer containing 0.1 % BSA to a concentration of 0.1-1.0 mg/mL. Stock solutions should be apportioned into working aliquots and stored at ≤ -20 °C. Further dilutions should be made in appropriate buffered solutions.

GENE INFORMATION

Gene Name	FGF10 fibroblast growth factor 10 [Homo sapiens]
Official Symbol	FGF10
Synonyms	FGF10; fibroblast growth factor 10; FGF-10; keratinocyte growth factor 2; produced by fibroblasts of urinary bladder lamina propria
Gene ID	2255
mRNA Refseq	NM_004465
Protein Refseq	NP_004456
MIM	602115
UniProt ID	O15520

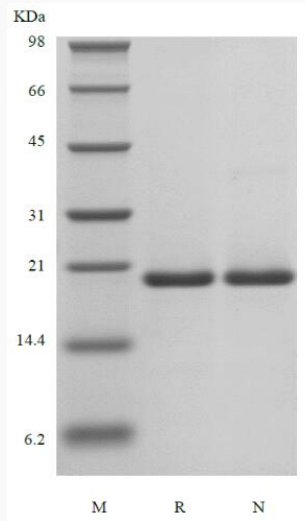
 Tel: 1-631-559-9269 1-516-512-3133

 Email: info@creative-biomart.com  Fax: 1-631-938-8127

 45-1 Ramsey Road, Shirley, NY 11967, USA



SDS-PAGE



Tel: 1-631-559-9269 1-516-512-3133

Email: info@creative-biomart.com Fax: 1-631-938-8127

45-1 Ramsey Road, Shirley, NY 11967, USA